

# DRILLMEX

VOTRE PARTENAIRE DE SOLUTIONS  
YOUR SOLUTIONS PARTNER

PRICING AVAILABLE OCTOBER 1, 2024 THROUGH DECEMBER 31, 2024

## FEATURING

**7**  
PAGE



**118° STANDARD  
POINT HIGH SPEED  
STEEL JOBBER DRILL  
SETS**

**22**  
PAGE



**CERAMIC CONVEXED  
CERA-CUT & BLADES**

**39**  
PAGE



**3-JAW SEMI STEEL  
PLAIN BACK CHUCKS**

## Indexable Miniature Boring Bar Set

- For precision finishing boring operations
- Includes 3 boring bars and 10 CVD coated inserts
- For use in alloy steel and stainless steel



### Set Includes: Boring Bar Shank Size Minimum Bore

- S06H-SCLCR-2 .375 .394
- S08K-SCLCR-2 .500 .550
- S10M-SCLCR-2 .625 .708
- (10) CCMT 21.51 CVD coated inserts
- (1) T-8 Torx key
- (1) Storage case

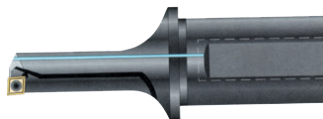
Order No.	Regular Price	SALE
FL4585064	507.95	<b>455.00</b>

8744

## Mini Drills

### Coolant-Thru

- Introducing unique "Mini-Drills" that utilize a single, standard CCMT insert.
- Finally, a drill that lets you drill from solid, bore, internal turn and face without being locked into a special high priced insert or single source
- Designed to fit directly into turret, or 1" boring bar adapter
- \*For ØD 3/8", tool must be .060" off center, X = .060" For ØD 1/2", tool must be .020" off center, X = .020" For ØD 5/8", tool must be .050" off center, X = .050"



Actual bore produced: 3/8" = .490" 1/2" = .530" 5/8" = .725"

Cutting Diameter (DC)	Connection Diameter Machine Side (DCONMS)	Usable Length (LU)	Shank Length (LS)	Master Insert Identification (MIID)	Order No.	Regular Price	SALE
1/2"	1"	1.2"	1-3/4"	CCMT 2-...	FG40D12	88.95	<b>60.20</b>
3/8"	1"	1"	1-3/4"	CCMT 2-...	FG40D38	85.88	<b>58.10</b>
5/8"	1"	2"	1-3/4"	CCMT 3-...	FG40D58	104.29	<b>70.60</b>

9167

EVEREDE TOOL COMPANY



## Spotting Drills

- One tool will perform multiple applications
- Each insert has two or four cutting edges
- Great for spotting, chamfering, grooving and engraving applications



82 Degrees					
Connection Diameter Machine Side (DCONMS)	Overall Length (OAL)	Master Insert Identification (MIID)	Order No.	Regular Price	SALE
3/8"	3-1/2"	V0820802-NC2071	FG7010060	216.61	<b>177.90</b>
5/8"	4"	V08212T3-NC2071	FG7010061	258.81	<b>212.60</b>

90 Degrees					
Connection Diameter Machine Side (DCONMS)	Overall Length (OAL)	Master Insert Identification (MIID)	Order No.	Regular Price	SALE
1/4"	1.378"	N9MT05T1CT-NC2071	FG7010062	172.57	<b>141.80</b>
3/8"	3.543"	N9MT080204CT-NC40	FG7010063	216.61	<b>177.90</b>
5/8"	4"	N9MT11T3CT-NC40	FG7010064	258.81	<b>212.60</b>
1"	6"	N9MT1704CT-NC2071	FG7010065	341.34	<b>280.40</b>

142 Degrees					
Connection Diameter Machine Side (DCONMS)	Overall Length (OAL)	Master Insert Identification (MIID)	Order No.	Regular Price	SALE
5/8"	4"	V1420803-NC2071	FG7010066	258.81	<b>212.60</b>

22056



## Engraving Tool

- High positive rake angle
- High speeds, high feed rates - up to 20,000 RPM
- Economical with each insert having two cutting edges with excellent repeatability



Angle	Master Insert Identification (MIID)	Connection Diameter Machine Side (DCONMS)	Overall Length (OAL)	Order No.	Regular Price	SALE
45 Degrees	V04506TW06-NC2071	0.236"	1.575"	<b>FG7010068</b>	174.39	<b>165.70</b>
60 Degrees	V06006TW06-NC2071	0.236"	1.575"	<b>FG7010069</b>	174.39	<b>165.70</b>

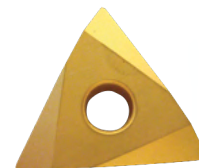
22054

## **PRO-CUT** On Edge Threading TNMA/C-NV 60° Vee Threading

TNMA has a straight hole TNMC has a countersink hole

### Carbide Grades

- PC2** - (C2) General purpose for cast iron and non-ferrous metals (exotics)  
**PC5** - (C5) Steel Cutting  
**PC300** - (C5 Coated) TiN-TiC-TiN Steel cutting at higher speeds with greater lubricity



			PC2 - Cast Iron			PC300 - Coated Steel Grade			PC5 - Steel Grade		
Insert Size	Insert Thickness (S)	Insert Style	Order No.	Regular Price	SALE	Order No.	Regular Price	SALE	Order No.	Regular Price	SALE
3/8"	1/8"	TNMA32NV	<b>FF4621010</b>	23.67	<b>15.85</b>	<b>FF4631010</b>	30.36	<b>19.30</b>	<b>FF4651010</b>	23.26	<b>15.40</b>
3/8"	1/8"	TNMC32NV	<b>FF4621020</b>	32.22	<b>15.40</b>	<b>FF4631020</b>	30.43	<b>19.30</b>	<b>FF4651020</b>	23.26	<b>15.70</b>
1/2"	0.187"	TNMA43NV	<b>FF4621030</b>	22.85	<b>15.40</b>	<b>FF4631030</b>	31.42	<b>20.54</b>	<b>FF4651030</b>	25.21	<b>16.95</b>
1/2"	0.187"	TNMC43NV	<b>FF4621040</b>	26.40	<b>17.15</b>	<b>FF4631040</b>	31.42	<b>20.40</b>	<b>FF4651040</b>	25.21	<b>16.95</b>
5/8"	1/4"	TNMA54NV	-	-	-	<b>FF4631050</b>	40.32	<b>25.65</b>	<b>FF4651050</b>	31.54	<b>21.20</b>
5/8"	1/4"	TNMC54NV	-	-	-	<b>FF4631060</b>	39.21	<b>25.20</b>	<b>FF4651060</b>	31.54	<b>21.00</b>
3/8"	3/8"	TNMC66NV	-	-	-	<b>FF4631100</b>	60.64	<b>39.00</b>	-	-	-

9245



# CUTTING TOOLS

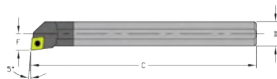


## ULTRA-DEX Positive 80° Diamond -5° Lead

### Boring Bars Coolant Thru

#### Steel Bars

- 4:1 Ratio
- Right hand shown



Right Hand								
Connection Diameter Machine Side (DCONMS)	Master Insert Identification (MIID)	Minimum Bore Diameter (DMIN)	Functional Width (WF)	Overall Length (OAL)	ManufacturerNo	Order No.	Regular Price	SALE
1/4"	CDGW 1.510	.312"	.172"	3-1/2"	957-000-003	FG550848	131.40	105.10
0.312"	CPMT 1.81.20.5	.395"	.219"	3-1/2"	957-000-011	FG550719	131.40	105.10
3/8"	CCMT 21.51	.460"	.250"	5"	957-000-021	FG550726	142.44	114.00
3/8"	CPMT 21.51	.460"	.250"	5"	957-000-025	FG550720	142.44	114.00
1/2"	CCMT 21.51	.600"	.312"	6"	957-000-050	FG550727	155.16	124.10
1/2"	CPMT 21.51	.600"	.312"	6"	957-000-056	FG550721	155.16	124.10
1/2"	CCMT 32.51	.625"	.344"	6"	957-000-052	FG550885	155.16	124.10
1/2"	CPMT 32.51	.625"	.344"	6"	957-000-058	FG550890	155.16	124.10
5/8"	CCMT 21.51	.760"	.406"	7"	957-000-085	FG550728	191.66	153.30
5/8"	CPMT 21.51	.760"	.406"	7"	957-000-089	FG550722	191.66	153.30
5/8"	CCMT 32.51	.760"	.406"	7"	957-000-086	FG550729	191.66	153.30
5/8"	CPMT 32.51	.760"	.406"	7"	957-000-090	FG550723	191.66	153.30
3/4"	CCMT 32.51	.920"	.500"	7"	957-000-107	FG550730	224.47	179.60
3/4"	CPMT 32.51	.920"	.500"	7"	957-000-109	FG550724	224.47	179.60
1"	CCMT 32.51	1.185"	.625"	8"	957-000-134	FG550731	295.60	236.50
1"	CPMT 32.51	1.185"	.625"	8"	957-000-136	FG550725	295.60	236.50
1-1/4"	CCMT 431	1.465"	.765"	14"	957-000-185	FG550732	463.48	370.80
1-1/2"	CCMT 431	1.730"	.890"	14"	957-000-199	FG550733	523.74	419.00

Left Hand								
Connection Diameter Machine Side (DCONMS)	Master Insert Identification (MIID)	Minimum Bore Diameter (DMIN)	Functional Width (WF)	Overall Length (OAL)	ManufacturerNo	Order No.	Regular Price	SALE
1/4"	CDGW 1.510	.312"	.172"	3-1/2"	957-000-001	FG550846	131.40	105.10
3/8"	CCMT 21.51	.460"	.250"	5"	957-000-019	FG550861	142.44	114.00
3/8"	CPMT 21.51	.460"	.250"	5"	957-000-023	FG550864	142.44	114.00
1/2"	CCMT 21.51	.600"	.312"	6"	957-000-047	FG550881	155.16	124.10
1/2"	CPMT 21.51	.600"	.312"	6"	957-000-053	FG550886	155.16	124.10
1/2"	CCMT 32.51	.625"	.344"	6"	957-000-049	FG550883	155.16	124.10
1/2"	CPMT 32.51	.625"	.344"	6"	957-000-055	FG550888	155.16	124.10
5/8"	CCMT 21.51	.760"	.406"	7"	957-000-083	FG550907	191.66	153.30
5/8"	CPMT 21.51	.760"	.406"	7"	957-000-087	FG550909	191.66	153.30
5/8"	CCMT 32.51	.760"	.406"	7"	957-000-084	FG550908	191.66	153.30
5/8"	CPMT 32.51	.760"	.406"	7"	957-000-088	FG550910	191.66	153.30
3/4"	CCMT 32.51	.920"	.500"	7"	957-000-106	FG550921	224.47	179.60
3/4"	CPMT 32.51	.920"	.500"	7"	957-000-108	FG550922	224.47	179.60
1"	CCMT 32.51	1.185"	.625"	8"	957-000-133	FG550943	295.60	236.50
1"	CPMT 32.51	1.185"	.625"	8"	957-000-135	FG552002	295.60	236.50
1-1/4"	CCMT 431	1.465"	.765"	14"	957-000-183	FG550984	463.48	370.80
1-1/2"	CCMT 431	1.730"	.890"	14"	957-000-198	FG550996	523.74	419.00

**INTERNAL TOOL** Solid Carbide Boring Tools

- Solid Micrograin Carbide
- For boring all types of material
- All shanks have lockdown flat for faster setups
- Tapered neck and fillet radius provide maximum rigidity
- Minimum Bore +.000/--.005



Connection Diameter Machine Side (DCONMS)	Minimum Bore Diameter (DMIN)	Overall Length (OAL)	Overhang Minimum (OHN)	Order No.	Regular Price	SALE
1/8"	0.05"	2"	0.15"	GE97101000	32.48	26.40
1/8"	0.05"	2"	0.2"	GE97101005	32.48	26.40
1/8"	0.05"	2"	0.3"	GE97101010	32.48	26.40
1/8"	0.05"	2"	0.4"	GE97101015	32.48	26.40
1/8"	0.06"	2"	0.15"	GE97101020	32.48	26.40
1/8"	0.06"	2"	0.2"	GE97101025	32.48	26.40
1/8"	0.06"	2"	0.3"	GE97101030	32.48	26.40
1/8"	0.06"	2"	0.4"	GE97101035	32.48	26.40
1/8"	0.06"	2"	1/2"	GE97101040	32.48	26.40
1/8"	0.08"	2"	0.15"	GE97101045	32.48	26.40
1/8"	0.08"	2"	0.2"	GE97101050	32.48	26.40
1/8"	0.08"	2"	0.3"	GE97101055	32.48	26.40
1/8"	0.08"	2"	0.4"	GE97101060	32.48	26.40
1/8"	0.08"	2"	1/2"	GE97101065	32.48	26.40
1/8"	0.08"	2"	0.6"	GE97101070	32.48	26.40
1/8"	0.1"	2"	0.15"	GE97101075	32.48	26.40
1/8"	0.1"	2"	0.2"	GE97101080	32.48	26.40
1/8"	0.1"	2"	0.3"	GE97101085	32.48	26.40
1/8"	0.1"	2"	0.4"	GE97101090	32.48	26.40
1/8"	0.1"	2"	1/2"	GE97101095	32.48	26.40
1/8"	0.1"	2"	0.6"	GE97101100	32.48	26.40
1/8"	0.1"	2"	0.7"	GE97101105	32.48	26.40
1/8"	0.11"	2"	0.15"	GE97101110	32.48	26.40
1/8"	0.11"	2"	0.2"	GE97101115	32.48	26.40
1/8"	0.11"	2"	0.3"	GE97101120	32.48	26.40
1/8"	0.11"	2"	0.4"	GE97101125	32.48	26.40
1/8"	0.11"	2"	1/2"	GE97101130	32.48	26.40
1/8"	0.11"	2"	0.6"	GE97101135	32.48	26.40
1/8"	0.11"	2"	0.7"	GE97101140	32.48	26.40
3/16"	0.12"	2-1/2"	1/4"	GE97101145	34.80	28.30
3/16"	0.12"	2-1/2"	0.35"	GE97101150	34.80	28.30
3/16"	0.12"	2-1/2"	1/2"	GE97101155	34.80	28.30
3/16"	0.12"	2-1/2"	0.6"	GE97101160	34.80	28.30
3/16"	0.12"	2-1/2"	0.7"	GE97101165	34.80	28.30
3/16"	0.12"	2-1/2"	0.8"	GE97101170	34.80	28.30
3/16"	0.14"	2-1/2"	1/4"	GE97101175	34.80	28.30
3/16"	0.14"	2-1/2"	0.4"	GE97101180	34.80	28.30
3/16"	0.14"	2-1/2"	1/2"	GE97101185	34.80	28.30
3/16"	0.14"	2-1/2"	0.6"	GE97101190	34.80	28.30
3/16"	0.14"	2-1/2"	0.7"	GE97101195	34.80	28.30
3/16"	0.14"	2-1/2"	3/4"	GE97101200	34.80	28.30
3/16"	0.14"	2-1/2"	0.8"	GE97101205	34.80	28.30
3/16"	0.16"	2-1/2"	1/4"	GE97101210	34.80	28.30
3/16"	0.16"	2-1/2"	0.4"	GE97101215	34.80	28.30
3/16"	0.16"	2-1/2"	1/2"	GE97101220	34.80	28.30
3/16"	0.16"	2-1/2"	0.6"	GE97101225	34.80	28.30
3/16"	0.16"	2-1/2"	3/4"	GE97101230	34.80	28.30
3/16"	0.16"	2-1/2"	0.9"	GE97101235	34.80	28.30
3/16"	0.16"	2-1/2"	1"	GE97101240	34.80	28.30
1/4"	0.18"	2-1/2"	0.35"	GE97101245	37.47	30.40
1/4"	0.18"	2-1/2"	1/2"	GE97101250	37.47	30.40
1/4"	0.18"	2-1/2"	0.6"	GE97101255	37.47	30.40
1/4"	0.18"	2-1/2"	3/4"	GE97101260	37.47	30.40
1/4"	0.18"	2-1/2"	0.9"	GE97101265	37.47	30.40
1/4"	0.18"	2-1/2"	1"	GE97101270	37.47	30.40
1/4"	0.18"	2-1/2"	1.1"	GE97101275	37.47	30.40
1/4"	0.2"	2-1/2"	0.4"	GE97101280	37.47	30.40
1/4"	0.2"	2-1/2"	1/2"	GE97101285	37.47	30.40
1/4"	0.2"	2-1/2"	0.6"	GE97101290	37.47	30.40

Connection Diameter Machine Side (DCONMS)	Minimum Bore Diameter (DMIN)	Overall Length (OAL)	Overhang Minimum (OHN)	Order No.	Regular Price	SALE
1/4"	0.2"	2-1/2"	0.7"	GE97101295	37.47	30.40
1/4"	0.2"	2-1/2"	0.8"	GE97101300	37.47	30.40
1/4"	0.2"	2-1/2"	0.9"	GE97101305	37.47	30.40
1/4"	0.2"	2-1/2"	1"	GE97101310	37.47	30.40
1/4"	0.2"	2-1/2"	1.1"	GE97101315	37.47	30.40
1/4"	0.2"	2-1/2"	1.2"	GE97101320	37.47	30.40
1/4"	0.2"	2-1/2"	1.3"	GE97101325	37.47	30.40
5/16"	0.23"	2-1/2"	0.4"	GE97101330	51.36	41.70
5/16"	0.23"	2-1/2"	1/2"	GE97101335	51.36	41.70
5/16"	0.23"	2-1/2"	0.6"	GE97101340	51.36	41.70
5/16"	0.23"	2-1/2"	0.7"	GE97101345	51.36	41.70
5/16"	0.23"	2-1/2"	0.8"	GE97101350	51.36	41.70
5/16"	0.23"	2-1/2"	0.9"	GE97101355	51.36	41.70
5/16"	0.23"	2-1/2"	1"	GE97101360	51.36	41.70
5/16"	0.23"	2-1/2"	1.15"	GE97101365	51.36	41.70
5/16"	0.23"	2-1/2"	1.2"	GE97101370	51.36	41.70
5/16"	0.23"	2-1/2"	1-1/4"	GE97101375	51.36	41.70
5/16"	0.23"	2-1/2"	1.4"	GE97101380	51.36	41.70
5/16"	0.23"	2-1/2"	1-1/2"	GE97101385	51.36	41.70
5/16"	0.23"	2-1/2"	1.6"	GE97101390	51.36	41.70
5/16"	0.29"	2-1/2"	1/2"	GE97101395	51.36	41.70
5/16"	0.29"	2-1/2"	0.6"	GE97101400	51.36	41.70
5/16"	0.29"	2-1/2"	3/4"	GE97101405	51.36	41.70
5/16"	0.29"	2-1/2"	0.9"	GE97101410	51.36	41.70
5/16"	0.29"	2-1/2"	1"	GE97101415	51.36	41.70
5/16"	0.29"	2-1/2"	1.1"	GE97101420	51.36	41.70
5/16"	0.29"	2-1/2"	1-1/4"	GE97101425	51.36	41.70
5/16"	0.29"	2-1/2"	1.35"	GE97101430	51.36	41.70
5/16"	0.29"	2-1/2"	1-1/2"	GE97101435	51.36	41.70
5/16"	0.29"	2-1/2"	1.6"	GE97101440	51.36	41.70
5/16"	0.29"	2-1/2"	1-3/4"	GE97101445	51.36	41.70
3/8"	0.32"	2-1/2"	1/2"	GE97101450	71.80	58.30
3/8"	0.32"	2-1/2"	0.6"	GE97101455	71.80	58.30
3/8"	0.32"	2-1/2"	3/4"	GE97101460	71.80	58.30
3/8"	0.32"	2-1/2"	0.9"	GE97101465	71.80	58.30
3/8"	0.32"	2-1/2"	1"	GE97101470	71.80	58.30
3/8"	0.32"	2-1/2"	1.1"	GE97101475	71.80	58.30
3/8"	0.32"	2-1/2"	1-1/4"	GE97101480	71.80	58.30
3/8"	0.32"	2-1/2"	1-1/2"	GE97101485	71.80	58.30
3/8"	0.32"	2-1/2"	1.6"	GE97101490	71.80	58.30
3/8"	0.32"	2-1/2"	1.8"	GE97101495	71.80	58.30
3/8"	0.32"	4"	2"	GE97101500	92.38	75.00
3/8"	0.32"	4"	2-1/2"	GE97101505	92.38	75.00
3/8"	0.32"	4"	3"	GE97101510	92.38	75.00
3/8"	0.36"	2-1/2"	1/2"	GE97101515	71.80	58.30
3/8"	0.36"	2-1/2"	0.6"	GE97101520	71.80	58.30
3/8"	0.36"	2-1/2"	3/4"	GE97101525	71.80	58.30
3/8"	0.36"	2-1/2"	0.9"	GE97101530	71.80	58.30
3/8"	0.36"	2-1/2"	1"	GE97101535	71.80	58.30
3/8"	0.36"	2-1/2"	1.15"	GE97101540	71.80	58.30
3/8"	0.36"	2-1/2"	1-1/4"	GE97101545	71.80	58.30
3/8"	0.36"	2-1/2"	1-1/2"	GE97101550	71.80	58.30
3/8"	0.36"	2-1/2"	1.6"	GE97101555	71.80	58.30
3/8"	0.36"	2-1/2"	1.8"	GE97101560	71.80	58.30
3/8"	0.36"	4"	2"	GE97101565	92.38	75.00
3/8"	0.36"	4"	2-1/2"	GE97101570	92.38	75.00
3/8"	0.36"	4"	3"	GE97101575	92.38	75.00
3/8"	0.49"	3"	3/4"	GE97101580	100.71	81.80
1/2"	0.49"	3"	1"	GE97101585	100.71	81.80
1/2"	0.49"	3"	1-1/4"	GE97101590	100.71	81.80
1/2"	0.49"	3"	1-1/2"	GE97101595	100.71	81.80
1/2"	0.49"	4"	2"	GE97101600	110.11	89.40
1/2"	0.49"	4"	2-1/2"	GE97101605	110.11	89.40
1/2"	0.49"	4"	2.6"	GE97101610	110.11	89.40
1/2"	0.49"	6"	3"	GE97101615	138.74	112.60
1/2"	0.49"	6"	3-1/2"	GE97101620	138.74	112.60
1/2"	0.49"	6"	4"	GE97101625	138.74	112.60
1/2"	0.49"	6"	4-1/2"	GE97101630	138.74	112.60





# CUTTING TOOLS



## Dumont Keyway Broach Sets

- Now you can make precision holes or keyways in seconds... a few at a time or production quantities... by a simple push-through broaching operation using a hand operated arbor press or hydraulic press
- All sets furnished in handsome varnished wood box come complete with precision broaches, slotted bushings, and necessary shims
- Set No. 00** - the most common keyway combinations for small keyways and bores. 3 broaches & 5 bushings (all bushings are collared style) = 15 combinations
- Set No. 10** - Our best selling broach set. 4 broaches & 9 bushings (all bushings are plain style) = 18 combinations



Bushings	Style	Order No.	Regular Price	SALE
1/4 5/16 3/8 7/16 1/2	A	FB5011101	536.93	<b>433.95</b>

22311



## No. 10 Standard Set

No. 10 - est selling broach set.4 broaches & 9 bushings = 18 combinations



Bushings	Style	Order No.	Regular Price	SALE
1/2 5/8 3/4 7/8 1 1-1/8 1-1/4 1-3/8 1-1/2	B C	FB5011104	937.33	<b>756.95</b>

9716



## No. 10-10A Combination Set

Combines 10 and 10A sets.4 broaches & 18 bushings = 36 combinations



Bushings	Style	Order No.	Regular Price	SALE
1/2 5/8 3/4 7/8 1 1-1/8 1-1/4 1-3/8 1-1/2 9/16 11/16 13/16 15/16 1-1/16 1-3/16 1-5/16 1-7/16 1-9/16	B C	FB5011120	1,203.68	<b>895.95</b>

9717

## INTERNAL TOOL Multi-Reach Boring Bars

- Solid Micrograin Carbide
- Reach is Not limited by neck length
- Solid carbide shank and head silver soldered together
- Minimum Bore +.000/- .005

Connection Diameter Machine Side (DCONMS)	Minimum Bore Diameter (DMIN)	Overall Length (OAL)	Corner Radius (RE)	Uncoated			AITIN		
				Order No.	Regular Price	SALE	Order No.	Regular Price	SALE
0.187"	0.22"	4"	0.005"	GE97041095	88.55	<b>71.90</b>	GE97041095C	97.50	<b>79.10</b>
1/4"	0.28"	4"	0.007"	GE97041100	88.55	<b>71.90</b>	GE97041100C	97.50	<b>79.10</b>
0.312"	0.35"	4"	0.007"	GE97041110	105.75	<b>85.90</b>	GE97041110C	120.06	<b>97.50</b>
3/8"	0.42"	6"	0.01"	GE97041120	128.24	<b>104.10</b>	GE97041120C	149.73	<b>121.60</b>
1/2"	0.56"	6"	0.01"	GE97041130	179.57	<b>145.80</b>	GE97041130C	204.63	<b>166.10</b>
5/8"	0.7"	6"	0.015"	GE97041140	243.29	<b>197.50</b>	GE97041140C	272.81	<b>221.50</b>

30124



## TuffCut® XR 4 Flute ALtima® Coated HP Ball Nose End Mills



### Fractional Sizes

- Center cutting
- 35°/38° Helix
- M.A. Ford Series #179

Cutting Diameter (DC)	Connection Diameter Machine Side (DCONMS)	Usable Length (LU)	Overall Length (OAL)	Order No.	Regular Price	SALE
1/16"	1/8"	1/8"	1-1/2"	DD1618284	50.08	<b>29.90</b>
5/64"	1/8"	5/32"	1-1/2"	DD1618286	45.73	<b>27.30</b>
3/32"	1/8"	3/16"	1-1/2"	DD1618288	45.73	<b>27.30</b>
1/8"	1/8"	1/4"	1-1/2"	DD1618034	36.78	<b>21.90</b>
1/8"	1/8"	3/8"	1-1/2"	DD1618035	39.06	<b>23.30</b>
3/16"	3/16"	3/8"	2"	DD1618038	50.93	<b>30.40</b>
3/16"	3/16"	5/8"	2"	DD1618039	54.20	<b>32.30</b>
1/4"	1/4"	3/8"	2"	DD1518042	56.11	<b>33.40</b>
1/4"	1/4"	3/4"	2-1/2"	DD1618043	66.32	<b>39.50</b>
1/4"	1/4"	1/2"	4"	DD1618063	106.64	<b>63.60</b>
5/16"	5/16"	1/2"	2"	DD1618045	85.20	<b>50.80</b>
5/16"	5/16"	13/16"	2-1/2"	DD1618046	90.84	<b>54.10</b>
3/8"	3/8"	1/2"	2"	DD1618048	102.47	<b>61.10</b>
3/8"	3/8"	7/8"	2-1/2"	DD1618049	109.10	<b>65.00</b>
3/8"	3/8"	9/16"	4"	DD1618064	145.51	<b>86.70</b>
1/2"	1/2"	5/8"	2-1/2"	DD1618054	167.73	<b>100.00</b>
1/2"	1/2"	1-1/4"	3"	DD1618055	178.51	<b>106.40</b>
1/2"	1/2"	5/8"	5"	DD1618065	224.25	<b>133.68</b>
5/8"	5/8"	1-1/4"	3-1/2"	DD1618058	337.12	<b>200.90</b>
5/8"	5/8"	3/4"	6"	DD1618066	400.45	<b>238.70</b>
3/4"	3/4"	1"	6"	DD1618067	576.74	<b>343.80</b>
3/4"	3/4"	1-1/2"	4"	DD1618060	495.45	<b>295.30</b>
1"	1"	1-1/2"	4"	DD1618062	754.61	<b>449.80</b>
1"	1"	1-1/4"	6"	DD1618068	905.08	<b>539.50</b>

9932

**CL** **3-in-1 118° Standard & 135° Split Point Combination High Speed Steel Jobber Drill Sets**

- Complete with index
- Drills ground from solid



**PT** **118° Standard Point High Speed Steel Jobber Drill Sets**

- Complete with index
- Drills ground from solid



				Chicago-Latrobe		
Quantity	Diameter Range	Coating	Tool Type	Order No.	Regular Price	SALE
115	1/16" to 1/2"   A to Z   #1 to #60	Bright	Jobber Length	CH1049928	1,042.02	<b>729.40</b>
115	1/16" to 1/2"   A to Z   #1 to #60	Black Oxide	Jobber Length	CH1057728	1,034.24	<b>724.00</b>
115	1/16" to 1/2"   A to Z   #1 to #60	Black Oxide	Split Point   Heavy Duty	CH1045650	1,207.86	<b>845.50</b>

9624

			Precision Twist Drill		
Quantity	Diameter Range	Coating	Order No.	Regular Price	SALE
15	1/16" to 1/2"	Bright	PT2790163	279.82	<b>223.90</b>
15	1/16" to 1/2"	Black Oxide	PT2799978	282.83	<b>226.30</b>
25	1 mm to 13 mm	Bright	PT2799987	529.56	<b>423.60</b>
29	1/16" to 1/2"	Bright	PT2790162	516.02	<b>412.80</b>
29	1/16" to 1/2"	Black Oxide	PT2799977	516.02	<b>412.80</b>
29	1/16" to 1/2"	Surface Treated	PT2799935	1,370.52	<b>1,096.40</b>

MT1218005 is Left Hand

10055

**Starrett® Univerz® Portable Bands**

**With Starrett Bi-Metal Unique Technology**

- Triple tempered M-42 cobalt high speed steel teeth with a fatigue resistant alloy steel backer
- Patented "Twin Tooth" design
- Faster cutting and longer tool life than ordinary blades



Teeth per Inch (TPI)	Length	Width (W)	Thickness (H)	Order No.	Regular Price	SALE
10	44-7/8"	1/2"	0.02"	FX83BM10	22.48	<b>16.60</b>
14	44-7/8"	1/2"	0.02"	FX83BM14	22.48	<b>16.60</b>
18	44-7/8"	1/2"	0.02"	FX83BM18	22.48	<b>16.60</b>
24	44-7/8"	1/2"	0.02"	FX83BM24	22.48	<b>16.60</b>
10/14 VT	44-7/8"	1/2"	0.02"	FX83BM1014	22.48	<b>16.60</b>
14/18 VT	44-7/8"	1/2"	0.02"	FX83BM1418	22.48	<b>16.60</b>

† Priced each & Sold in sleeves (3 per sleeve) only. Sleeve cannot be broken

25065

**DORMER** **Heavy Duty Cobalt Screw Machine Drills**



**Cobalt • 135° Split Point**

- Effective in high alloys and work hardening materials
- Precision Twist List #M40CO

Drill Bit Size / Cutting Diameter (DC)	Cutting Depth	Overall Length (OAL)	Order No.	Regular Price	SALE
1/16"	5/8"	1-5/8"	PT1840304	6.75	<b>6.40</b>
5/64"	11/16"	1-11/16"	PT1840305	6.79	<b>6.50</b>
3/32"	3/4"	1-3/4"	PT1840306	6.75	<b>6.40</b>
7/64"	13/16"	1-13/16"	PT1840307	7.67	<b>7.30</b>
1/8"	7/8"	1-7/8"	PT1840308	8.79	<b>8.40</b>
9/64"	15/16"	1-15/16"	PT1840309	8.90	<b>8.50</b>
5/32"	1"	2-1/16"	PT1840310	9.64	<b>9.20</b>
11/64"	1-1/16"	2-1/8"	PT1840311	10.94	<b>10.40</b>
13/64"	1-3/16"	2-1/4"	PT1840313	14.62	<b>13.90</b>
15/64"	1-5/16"	2-7/16"	PT1840315	17.91	<b>17.00</b>
1/4"	1-3/8"	2-1/2"	PT1840316	17.91	<b>17.00</b>
17/64"	1-7/16"	2-5/8"	PT1840317	21.06	<b>20.00</b>
5/16"	1-5/8"	2-13/16"	PT1840320	27.75	<b>26.40</b>
3/8"	1-13/16"	3-1/8"	PT1840324	38.37	<b>36.50</b>
13/32"	1-15/16"	3-5/16"	PT1840326	45.28	<b>43.00</b>
1/2"	2-1/4"	3-3/4"	PT1840332	61.54	<b>58.50</b>

24345



## PRO-CUT Taper Pipe Reamers

Spiral Flute • High Speed Steel



Diameter	Small End Diameter	Large End Diameter	Length Chip Flute (LCF)	Overall Length (OAL)	Order No.	Regular Price	SALE
1/8"	0.316"	0.362"	3/4"	2-1/8"	EM90002	34.26	17.55
1/4"	0.406"	0.472"	1-1/16"	2-7/16"	EM90004	39.37	20.10
3/8"	0.54"	0.606"	1-1/16"	2-9/16"	EM90006	44.35	22.69
1/2"	0.665"	0.751"	1-3/8"	3-1/8"	EM90008	56.07	28.70
3/4"	0.876"	0.962"	1-3/8"	3-1/4"	EM90012	77.75	39.80
1"	1.103"	1.212"	1-3/4"	3-3/4"	EM90016	113.32	58.00
1-1/4"	1.444"	1.553"	1-3/4"	4"	EM90020	192.04	98.30
1-1/2"	1.684"	1.793"	1-3/4"	4-1/4"	EM90028	244.83	125.30
2"	2.159"	2.268"	1-3/4"	4-1/2"	EM90032	323.88	165.80

10375

## PRO-CUT 8 Pc. "Big Boy" 1/2" Reduced Shank Drill Set

- High speed steel
- Silver & Deming
- Set includes: 1-1/16", 1-1/8", 1-3/16", 1-1/4", 1-5/16", 1-3/8", 1-7/16" & 1-1/2", in wooden stand



Order No.	Regular Price	SALE
AK81S08	365.12	249.95

10292

## PRO-CUT Single Flute Countersinks

High Speed Steel 60°, 82° & 90°



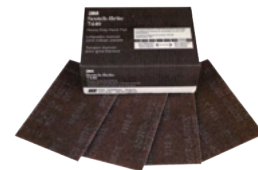
Cutting Diameter (DC)	Overall Length (OAL)	60 Degrees			82 Degrees			90 Degrees		
		Order No.	Regular Price	SALE	Order No.	Regular Price	SALE	Order No.	Regular Price	SALE
3/16"	1-1/2"	BC52RF360	7.40	3.95	BC52RF382	7.40	3.95	BC52RF390	7.34	3.95
1/4"	2"	BC52RF460	7.88	3.95	BC52RF482	7.88	3.95	BC52RF490	7.88	3.95
5/16"	2"	BC52RF560	8.15	3.95	BC52RF582	8.15	3.95	BC52RF590	8.15	3.95
3/8"	2"	BC52RF660	8.87	4.50	BC52RF682	8.87	4.50	BC52RF690	8.87	4.50
1/2"	2"	BC52RF860	11.58	5.95	BC52RF882	11.58	5.95	BC52RF890	11.58	5.95
5/8"	2-1/2"	BC52RF1060	15.84	7.95	BC52RF1082	15.84	7.95	BC52RF1090	15.84	7.95
3/4"	2-3/4"	BC52RF1260	21.48	10.95	BC52RF1282	21.48	10.95	BC52RF1290	21.48	10.95
7/8"	2-3/4"	BC52RF1460	34.76	17.95	BC52RF1482	35.11	17.95	BC52RF1490	35.11	17.95
1"	2-3/4"	BC52RF1660	37.69	19.95	BC52RF1682	37.69	19.95	BC52RF1690	37.69	19.95
1-1/4"	3"	BC52RF2060	57.33	29.95	BC52RF2082	57.33	29.95	BC52RF2090	57.33	29.95
1-1/2"	3-3/8"	BC52RF2460	89.27	46.95	BC52RF2482	90.10	46.95	BC52RF2490	90.10	46.95
2"	3-3/4"	BC52RF3260	146.15	76.95	BC52RF3282	147.53	76.95	BC52RF3290	147.53	76.95

24491



## 3M™ 6" x 9" Scotch-Brite™ Hand Pads

- Excellent products for hand finishing and cleaning of woods, metals and composites
- Ideal for wood finishing, paint prep and general cleaning
- Priced each / sold in standard pack only
- Save up to 10% on case qty. (60 pieces)



Type	Width	Length	Color	Grade	Standard Pack	3M Number	Order No.	Regular Price	SALE
7447	3 2/3"	9 1/4"	Maroon	Very Fine	100	7447PRO	TM2264958	3.48	<b>3.00</b>
7440	6"	9"	Tan	Coarse	20	7440	TM2265055	6.43	<b>5.50</b>
7440B	6"	9"	Tan	Medium	40	7440B	TM2218451	234.12	<b>199.00</b>
7446	6"	9"	Gray	Medium	20	7446	TM2265056	4.33	<b>3.70</b>
7447 & 7448 Pro	6"	9"	Maroon	Ultra Fine	20	7447/7448 Pro	TM2264933	7.73	<b>6.60</b>
7447 Pro	6"	9"	Maroon	Very Fine	20	7447PRO	TM2264926	2.28	<b>1.90</b>
7448	6"	9"	Gray	Super Ultra Fine	20	7448	TM2264935	2.39	<b>2.00</b>
7447	6"	9"	Maroon	Very Fine	20	7447	TM2204029	2.39	<b>2.00</b>
7448	6"	9"	Light Gray	Ultra Fine	20	7448	TM2204028	3.59	<b>2.50</b>

TM2218451 - 7440B Priced and Sold In Box of 40 Pcs.

135

## 3M™ Scotch-Brite™ Bristle Discs for Angle Grinders

- 4-1/2" Diameter with 5/8" trim length and 5/8-11 arbor hole
- Flexible yet durable bristles conform the workpiece without damaging base material
- Continuous supply of mineral in abrasive-filled bristles provides a high cut rate and more uniform finish
- Discs are designed to resist loading, extending service life
- Available in 3 grades: 50 (green), 80 (yellow) and 120 (white)
- Use with angle grinders with 5/8-11 spindle



Diameter	Grit	Maximum RPM	Color	Standard Pack	Order No.	Regular Price	SALE
4 1/2"	120	12,000	White	40	TM3124243	53.65	<b>45.60</b>
4 1/2"	50	12,000	Green	40	TM3124241	53.65	<b>45.60</b>
4 1/2"	80	12,000	Yellow	40	TM3124242	53.65	<b>45.60</b>

128



## Zirconia Premium Small Cut-Off Wheels - Type 1

- ZA: Zirconia aluminum oxide - metal, steel and stainless
- Longer lasting life and easy cutting action



Diameter	Thickness	Arbor Hole	Specification	Maximum RPM	Order No.	Regular Price	SALE
3"	1/16"	1/4"	ZA36-TBF	23900	MG9036173	3.97	<b>3.60</b>
3"	1/16"	3/8"	ZA36-TBF	23900	MG9036174	3.97	<b>3.60</b>
3"	1/32"	1/4"	ZA60-TBF	23900	MG9036175	3.78	<b>3.40</b>
3"	1/32"	3/8"	ZA60-TBF	23900	MG9036176	3.78	<b>3.40</b>
4"	1/16"	3/8"	ZA36-TBF	19100	MG9036178	5.21	<b>4.70</b>
4"	1/32"	1/4"	ZA60-TBF	19100	MG9036179	4.23	<b>3.80</b>
4"	1/32"	3/8"	ZA60-TBF	19100	MG9036180	4.45	<b>4.00</b>

22877



## Super Quickie Cut Reinforced Cut-Off Wheels

### Type 1 & Type 27

#1 Wheel choice for steel applications.

- Aluminum oxide grain for use on metal, steel and general applications



Diameter	Thickness	Arbor Hole	Maximum RPM	Specification	Standard Pack	Type 1			Type 27		
						Order No.	Regular Price	SALE	Order No.	Regular Price	SALE
4 1/2"	.045"	7/8"	13300	A60-TBF	50	MG9045102	4.23	<b>3.80</b>	MG9045103	4.13	<b>3.70</b>

22873



## 3-in-1 Cut-Grind-Finish Depressed Center Wheels - Type 27

- Cuts quickly, grinds easily and finishes work surfaces
- Contaminant free: less than 0.1 percent iron, sulfur or chlorine
- Fiberglass net reinforcement provides added strength and flexibility
- Ideal for stainless steel and a wide variety of metals and cutting metal profiles and thin pipes, and removing weld slag
- Use instead of a flap disc to complete the job with an excellent finish



Diameter	Arbor Hole	Width	Grit	Maximum RPM	Order No.	Regular Price	SALE
4 1/2"	7/8"	3/32"	36	13,300	MG9045218	3.78	<b>3.20</b>
4 1/2"	5/8"-11	3/32"	36	13,300	MG9045219	7.29	<b>6.10</b>
5"	7/8"	3/32"	36	12,250	MG9045220	4.58	<b>3.90</b>
5"	5/8"-11	3/32"	36	12,250	MG9045221	8.20	<b>6.90</b>
6"	7/8"	3/32"	36	10,200	MG9045222	6.73	<b>5.60</b>
6"	5/8"-11	3/32"	36	10,200	MG9045223	10.26	<b>8.60</b>

187

**NORTON** Flexible Diamond Hand Pads

- Lightweight and durable conformable backing adapts to a variety of surfaces.
- Precision dot pattern allows aggressive consistent cut rate, uniform finish and reduced loading.
- Can be used wet or dry, no dressing required.
- Color coded for easy identification.
- For shaping and rapid stock removal, touchup and repairs on ceramic, stone, marble, glass, composite and hard materials.
- Also used for polished dies and molds.



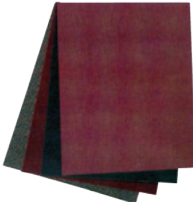
Width	Length	Grit	Color	Order No.	Regular Price	SALE
2 1/8"	3 1/2"	400	Yellow	MH63HP05852	43.64	<b>33.20</b>
2 1/8"	3 1/2"	60	Green	MH63HP06360	82.84	<b>63.00</b>
2 1/8"	3 1/2"	120	Black	MH63HP06361	67.63	<b>51.40</b>
2 1/8"	3 1/2"	200	Red	MH63HP06362	55.34	<b>42.10</b>
2 1/8"	3 1/2"	800	White	MH63HP06363	43.64	<b>33.20</b>
2 1/8"	3 1/2"	1800	Blue	MH63HP06364	43.64	<b>33.20</b>

24138

**NORTON** Abrasive Sheets - 9" x 11"

**Aluminum Oxide Cloth Sheets - Metalworking**

- Aluminum oxide with high temperature resin bond
- Long life and sharp, fast, cutting action
- Use on carbon & alloy steels, all metals & hard wood



**Silicon Carbide Waterproof Paper Sheets - Metalworking & Woodworking**

- Ideal for all materials, and prepaint applications
- Waterproof
- Standard pack: 60, 80 Grit, 25 pack - 100-800 grit, 50 pack

Aluminum Oxide				
Grit	Sheets Per Package	Order No.	Regular Price	SALE
P60	25	MH61S91101861	3.84	<b>2.70</b>
P80	25	MH61S91126340	3.27	<b>2.30</b>
P100	50	MH61S91126339	3.05	<b>2.20</b>
P120	50	MH61S91126338	3.05	<b>2.20</b>
P150	50	MH61S91126337	3.05	<b>2.20</b>
P180	50	MH61S91126336	3.05	<b>2.20</b>
P240	50	MH61S91126334	3.05	<b>2.20</b>
P320	50	MH61S91126332	3.05	<b>2.20</b>

Silicon Carbide				
Grit	Sheets Per Package	Order No.	Regular Price	SALE
180	50	MH61S91101150	2.81	<b>2.00</b>
220	50	MH61S91139367	2.47	<b>1.80</b>
240	50	MH61S91139366	2.47	<b>1.80</b>
320	50	MH61S91139364	2.47	<b>1.80</b>
400	50	MH61S91139362	2.47	<b>1.80</b>
500	50	MH61S91139361	2.47	<b>1.80</b>
600	50	MH61S91139360	2.47	<b>1.80</b>

24112

**NORTON** Silicon Carbide Bench Wheels

**Features:**

- These wheels cover a broad range of general bench grinding jobs
- Each wheel contains a free nested bushing
- For carbide and non-ferrous material

**Silicon Carbide Grit Range:**

- Medium - 60 grit for roughing of carbide tools
- Fine - 80 grit for all purpose grinding of carbide tools



Diameter - 6", Width - 1/2", Arbor Hole - 1"					
Grade	Maximum RPM	Standard Pack	Order No.	Regular Price	SALE
Medium Grit	4,140	1	MH60060036571	73.18	<b>52.00</b>
Medium Grit	4,140	1	MH60060036572	73.18	<b>52.00</b>
Fine Grit	4,140	1	MH60060036573	73.18	<b>52.00</b>

Diameter - 6", Width - 1", Arbor Hole - 1"					
Grade	Maximum RPM	Standard Pack	Order No.	Regular Price	SALE
Medium Grit	4,140	1	MH60060037187	94.15	<b>65.00</b>
Medium Grit	4,140	1	MH60060037193	94.15	<b>65.00</b>
Fine Grit	4,140	1	MH60060037194	94.15	<b>65.00</b>

Diameter - 6", Width - 3/4", Arbor Hole - 1"					
Grade	Maximum RPM	Standard Pack	Order No.	Regular Price	SALE
Medium Grit	4,140	1	MH60060037190	81.46	<b>56.00</b>
Medium Grit	4,140	1	MH60060037191	81.46	<b>56.00</b>
Fine Grit	4,140	1	MH60060037192	81.46	<b>56.00</b>

Diameter - 7", Width - 1", Arbor Hole - 1"					
Grade	Maximum RPM	Standard Pack	Order No.	Regular Price	SALE
Medium Grit	3,600	1	MH60070042300	115.05	<b>79.00</b>
Medium Grit	3,600	1	MH60070042301	115.05	<b>79.00</b>
Fine Grit	3,600	1	MH60070042302	115.05	<b>79.00</b>

24160

## DESMOND Huntington Pattern Hooded Grinding Wheel Dresser Model No. 0

- Designed for dressing, truing & removing glaze
- Fulfills most general dressing needs where fast dressing is required
- Cutters have a star shaped teeth that expose new abrasive grains
- For up to 10" diameter wheels with 2" face or less
- Replacement cutter sets are available

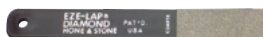


Order No.	Regular Price	SALE
LG500	39.41	<b>35.50</b>

23077

## FA® Diamond Sharpening Hones

- A quick easier way to hand sharpen both cutlery and tools
- The diamond abrasive is treated to be tougher and last longer
- Available in: fine, medium, and coarse
- Size of abrasive part: 2"L x 3/4"W - 5-7/8" OAL



Grade	Order No.	Regular Price	SALE
Coarse	FT65EZELC	16.09	<b>12.90</b>
Fine	FT65EZELF	10.71	<b>8.50</b>
Medium	FT65EZELM	13.38	<b>10.70</b>

23132

## STRAUSS & CO. INDUSTRIAL DIAMONDS LTD. 5 Pc. NF File Sets

- Set includes the following five files: Equalling, 1/2 Round, 3-Square, Square and Round



Grade	Order No.	Regular Price	SALE
Coarse	MN51C4205	150.35	<b>112.80</b>
Fine	MN51F4205	132.26	<b>99.20</b>
Medium	MN51M4205	150.35	<b>112.80</b>

613

## Flat Head Wheel Arbors

- Left hand threaded arbor
- "Flat Head" style allows mounting between a single washer and the flat-head
- For mounting wire wheel brushes & other abrasive finishing products
- Rust proof finish



Arbor Hole	Max. Wheel Width	Shank Diameter	Overall Length	Order No.	Regular Price	SALE
1/2"	1/2"	1/4"	2 5/16"	MM54FHL30	11.50	<b>7.50</b>
1/2"	3/8"	1/4"	17/8"	MM54FHL25X	6.99	<b>4.50</b>
1/2"	7/8"	1/4"	2 5/16"	MM54FHL30X	7.45	<b>4.80</b>
1/4"	3/4"	3/16"	1 3/4"	MM54FHL8X	12.10	<b>7.90</b>
3/8"	3/8"	1/4"	1 5/8"	MM54FHL10X	6.58	<b>4.30</b>
5/8"	3/8"	1/4"	17/8"	MM54FHL50X	13.90	<b>9.00</b>

364

## SURF PRO® Wheel Dresser Sticks

Rapid, economical way to dress grinding wheels.



Width	Thickness	Overall Length	Order No.	Regular Price	SALE
1"	1"	6"	MJ55116	10.06	<b>8.00</b>
1"	1"	8"	MJ55118	12.41	<b>9.90</b>

25467

**SUPERIOR** Quick Change Disc Holders

- Roll-On (TR) features nylon screw type thread
- Turn-On (TS) features metal to metal quick change system



Diameter	Order No.	Regular Price	SALE
2"	MM5964198	19.00	<b>17.10</b>
2"	MM5964922	18.81	<b>16.90</b>
3"	MM5964949	23.83	<b>21.40</b>

25121

**SUPERIOR** Surface Conditioning Quick Change Discs

- Ideal for blending, cleaning & deburring
- For both flat & contour applications
- Quick cutting action
- 2" - 50 pcs. per carton
- 3" - 25 pcs. per carton



		Surface Conditioning			
Diameter	Grade	Order No.	Regular Price	SALE	
1-1/2"	CRS	MM6410550	1.80	<b>1.20</b>	
2"	CRS	MM6410544	2.35	<b>1.50</b>	
2"	MED	MM6410554	2.25	<b>1.50</b>	
2"	VFN	MM6410546	2.25	<b>1.50</b>	
3"	CRS	MM6410547	4.23	<b>2.50</b>	
3"	MED	MM6410548	4.01	<b>2.50</b>	
3"	VFN	MM6410549	4.01	<b>2.50</b>	

2" Holder Roll-On MM59-64922 - Turn-On MM59-64198  
 3" Holder Roll-On MM59-64949 - Turn-On MM59-64113

10738

**General Purpose Combination Sharpening Stones**

120/240 Grit - Rectangular Shape

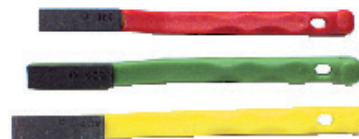


Overall Length	Width	Thickness	Abrasive Material	Order No.	Regular Price	SALE
6"	2"	1"	Silicon Carbide	MJ63109E	6.90	<b>4.50</b>
8"	2"	1"	Aluminum Oxide	MJ63108A	4.22	<b>2.70</b>
8"	2"	1"	Silicon Carbide	MJ63108E	7.76	<b>5.00</b>

530

**3 Pc. Boron Carbide Hand Lapper Set**

- **Red Color Lapper** - 240 Grit
- **Green Color Lapper** - 320 Grit
- **Yellow Color Lapper** - 400 Grit
- Ideal for honing cutting edges
- Can be used to hone surfaces on all types of metals including tungsten carbide
- These lappers are more effective when used with oil
- Long life and economical



Order No.	Regular Price	SALE
MM50HL3	116.29	<b>81.40</b>

172

**WEILER** General Purpose Crimped Wire Wheel Brushes



					0.008"			0.0118"		
Diameter	Width	Trim Length	Maximum RPM	Arbor Hole	Order No.	Regular Price	SALE	Order No.	Regular Price	SALE
3"	3/8"	5/8"	4,500	1/2"-3/8"	MK5036477	7.88	<b>5.90</b>	MK5036478	7.34	<b>5.50</b>
4"	7/16"	7/8"	4,500	1/2"-3/8"	-	-		MK5036480	9.30	<b>7.00</b>
6"	5/8"	1 1/4"	3,750	5/8"-1/2"	MK5036483	17.02	<b>12.80</b>	MK5036484	14.98	<b>11.20</b>
8"	3/4"	1 1/2"	3,750	5/8"	MK5036486	21.19	<b>15.90</b>	MK5036487	22.46	<b>16.80</b>

744



# ABRASIVES

## SURF PRO SGZ-SG Ceramic &

### Zirconia Resin Fiber Discs

Applicable Material: Stainless Steel, Titanium & Super Alloys, Mild Carbon Steel, Cold Rolled Steel, Cast Iron



Diameter	Arbor Hole	Grit	Order No.	Regular Price	SALE
4 1/2"	7/8"	16	SP11RF457016SGZ	2.13	<b>1.80</b>
4 1/2"	7/8"	24	SP11RF457024SGZ	1.90	<b>1.60</b>
4 1/2"	7/8"	36	SP11RF457036SGZ	1.89	<b>1.60</b>
4 1/2"	7/8"	50	SP11RF457050SGZ	1.98	<b>1.60</b>
4 1/2"	7/8"	60	SP11RF457060SGZ	1.45	<b>1.20</b>
4 1/2"	7/8"	80	SP11RF457080SGZ	1.35	<b>1.10</b>
4 1/2"	7/8"	100	SP11RF457100SGZ	1.30	<b>1.10</b>
4 1/2"	7/8"	120	SP11RF457120SGZ	1.25	<b>1.10</b>
5"	7/8"	16	SP11RF057016SGZ	2.73	<b>2.30</b>
5"	7/8"	24	SP11RF057024SGZ	2.44	<b>2.00</b>
5"	7/8"	36	SP11RF057036SGZ	2.25	<b>1.90</b>
5"	7/8"	50	SP11RF057050SGZ	2.09	<b>1.70</b>
5"	7/8"	60	SP11RF057060SGZ	1.85	<b>1.50</b>
5"	7/8"	80	SP11RF057080SGZ	1.73	<b>1.40</b>
5"	7/8"	100	SP11RF057100SGZ	1.59	<b>1.30</b>
5"	7/8"	120	SP11RF057120SGZ	1.55	<b>1.30</b>
7"	7/8"	16	SP11RF077016SGZ	5.13	<b>4.30</b>
7"	7/8"	24	SP11RF077024SGZ	4.53	<b>3.80</b>
7"	7/8"	36	SP11RF077036SGZ	4.13	<b>3.40</b>
7"	7/8"	50	SP11RF077050SGZ	3.77	<b>3.10</b>
7"	7/8"	60	SP11RF077060SGZ	3.32	<b>2.80</b>
7"	7/8"	80	SP11RF077080SGZ	3.10	<b>2.60</b>
7"	7/8"	100	SP11RF077100SGZ	2.92	<b>2.40</b>
7"	7/8"	120	SP11RF077120SGZ	2.84	<b>2.40</b>

28693

## SURF PRO PSA Gold Paper Discs with Tabs

- Made in the USA! Edge tear resistant! Made with strong .00050 Mylar film for superior edge tear resistance.
- Stearated paper with heat treated aluminum oxide grain and a full phenolic bond system for uniform scratch pattern
- Open coat disc design for fast cutting and exceptionally long life
- Sold 100 per pack



Number of Holes - No Hole				
Diameter	Grit	Order No.	Regular Price	SALE
5"	40	SP11DT50040GAC0	100.66	<b>75.50</b>
5"	60	SP11DT50060GAC0	87.68	<b>65.80</b>
5"	80	SP11DT50080GAC0	73.94	<b>55.50</b>
5"	100	SP11DT50100GAC0	61.68	<b>46.30</b>
5"	120	SP11DT50120GAC0	61.68	<b>46.30</b>
5"	150	SP11DT50150GAC0	64.96	<b>48.70</b>
5"	180	SP11DT50180GAC0	61.68	<b>46.30</b>
5"	220	SP11DT50220GAC0	61.68	<b>46.30</b>
5"	240	SP11DT50240GAC0	61.68	<b>46.30</b>
5"	320	SP11DT50320GAC0	70.42	<b>52.80</b>
5"	400	SP11DT50400GAC0	0.75	<b>0.60</b>
5"	600	SP11DT50600GAC0	61.68	<b>46.30</b>
5"	800	SP11DT50800GAC0	61.68	<b>46.30</b>
5"	1000	SP11DT501000GAC0	53.85	<b>41.30</b>
6"	40	SP11DT60040GAC0	149.36	<b>112.00</b>
6"	60	SP11DT60060GAC0	126.64	<b>95.00</b>
6"	80	SP11DT60080GAC0	94.19	<b>70.60</b>
6"	100	SP11DT60100GAC0	90.92	<b>68.20</b>
6"	120	SP11DT60120GAC0	90.92	<b>68.20</b>
6"	150	SP11DT60150GAC0	90.92	<b>68.20</b>
6"	240	SP11DT60240GAC0	90.92	<b>68.20</b>
6"	320	SP11DT60320GAC0	90.92	<b>68.20</b>
6"	400	SP11DT60400GAC0	90.92	<b>68.20</b>

Number of Holes - 5				
Diameter	Grit	Order No.	Regular Price	SALE
5"	80	SP11DT50080GAC5	64.96	<b>48.70</b>
5"	100	SP11DT50100GAC5	61.68	<b>46.30</b>
5"	120	SP11DT50120GAC5	61.68	<b>46.30</b>
5"	150	SP11DT50150GAC5	61.68	<b>46.30</b>
5"	180	SP11DT50180GAC5	61.68	<b>46.30</b>
5"	220	SP11DT50220GAC5	61.68	<b>46.30</b>

679

## SURF PRO Small Diameter Thin Cut-Off Wheels

### - Aluminum Oxide - Type 1

- Aluminum oxide grain
- Fiberglass reinforced
- General purpose rapid cutting applications
- Use for thin gauge sheet stock, thin walled tubing and small diameter cross sections
- Economical choice for cutting iron, steel, stainless steel and other materials



Diameter	Arbor Hole	Thickness	Grit	Specification	Maximum RPM	Order No.	Regular Price	SALE
2"	1/8"	.060"	36	A36-T-BF	30,550	SP010200601136A	4.62	<b>3.40</b>
2"	1/8"	.060"	46	TA461-S-B11F	30,550	SP010200601146A	4.19	<b>3.10</b>
2"	1/8"	.060"	60	TA702-U-B15F	30,550	SP010200601160A	4.62	<b>3.40</b>
2"	1/4"	.060"	36	A36-T-BF	30,550	SP010200602136A	4.15	<b>3.10</b>
2"	1/4"	.060"	46	TA461-S-B11F	30,550	SP010200602146A	4.19	<b>3.10</b>
2"	1/4"	.060"	60	TA702-U-B15F	30,550	SP010200602160A	4.62	<b>3.40</b>
2"	3/8"	.060"	36	A36-T-BF	30,550	SP010200603136A	4.19	<b>3.10</b>
2"	3/8"	.060"	46	TA461-S-B11F	30,550	SP010200603146A	4.19	<b>3.10</b>
2"	3/8"	.060"	60	TA702-U-B15F	30,550	SP010200603160A	4.19	<b>3.10</b>
3"	1/4"	.060"	36	A36-T-BF	25,000	SP010300602136A	2.37	<b>1.70</b>
3"	1/4"	.060"	46	TA461-S-B11F	25,000	SP010300602146A	2.41	<b>1.80</b>
3"	1/4"	.060"	60	TA702-U-B15F	25,000	SP010300602160A	2.59	<b>1.90</b>
3"	3/8"	.060"	36	A36-T-BF	25,000	SP010300603136A	2.45	<b>1.80</b>
3"	3/8"	.060"	46	TA461-S-B11F	25,000	SP010300603146A	2.40	<b>1.80</b>
3"	3/8"	.060"	60	TA702-U-B15F	25,000	SP010300603160A	2.43	<b>1.80</b>
4"	3/8"	.060"	36	A36-R-BF	25,000	SP010400603136A	3.67	<b>2.70</b>
4"	3/8"	.060"	46	TA461-S-B11F	25,000	SP010400603146A	3.74	<b>2.80</b>
4"	3/8"	.060"	60	TA702-U-B15F	25,000	SP010400603160A	3.30	<b>2.40</b>

25172

## SURF PRO Resin Bond Grinding Wheels - Type 1

- Aluminum oxide grain
- Fiberglass reinforced
- General purpose grinding applications
- Economical choice for cutting iron, steel, stainless steel and other materials



Diameter	Thickness	Arbor Hole	Grit	Specification	Maximum RPM	Order No.	Regular Price	SALE
3"	3/16"	1/4"	24	A24-R-B9FP	25,000	SP010301872124A	4.33	<b>2.90</b>
3"	3/16"	1/4"	36	A36-R-BF	25,000	SP010301872136A	5.74	<b>4.20</b>
3"	3/16"	1/4"	46	TA461-S-B11F	25,000	SP010301872146A	5.55	<b>4.10</b>
3"	3/16"	3/8"	24	A24-R-B9FP	25,000	SP010301873124A	2.93	<b>2.20</b>
3"	3/16"	3/8"	36	A36-R-BF	25,000	SP010301873136A	8.90	<b>6.20</b>
3"	3/16"	3/8"	46	TA461-S-B11F	25,000	SP010301873146A	5.55	<b>4.10</b>
3"	1/4"	3/8"	24	A24-R-B9FP	25,000	SP010302503124A	5.98	<b>4.40</b>
3"	1/4"	3/8"	30	A302-Q-B15F	25,000	SP010302503136A	5.79	<b>4.30</b>
3"	1/4"	3/8"	46	TA461-S-B11F	25,000	SP010302503146A	5.60	<b>4.10</b>
3"	1/4"	5/8"	24	A24-R-B9FP	25,000	SP010302505124A	5.86	<b>4.30</b>
3"	1/4"	5/8"	30	A302-Q-B15F	25,000	SP010302505136A	5.79	<b>4.30</b>
3"	1/4"	5/8"	46	TA461-S-B11F	25,000	SP010302505146A	5.60	<b>4.10</b>
3"	3/8"	3/8"	24	A24-R-B9FP	25,000	SP010303753124A	7.97	<b>5.90</b>
3"	3/8"	3/8"	30	A302-Q-B15F	25,000	SP010303753136A	7.97	<b>5.90</b>
3"	3/8"	3/8"	46	A462-S-BF	25,000	SP010303753146A	7.85	<b>5.80</b>
3"	1/2"	3/8"	24	A24-R-B9FP	25,000	SP010305003124A	8.54	<b>6.30</b>
3"	1/2"	3/8"	30	A302-Q-B15F	25,000	SP010305003136A	10.41	<b>7.70</b>
3"	1/2"	3/8"	46	A462-S-BF	25,000	SP010305003146A	10.28	<b>7.60</b>
4"	1/4"	3/8"	24	A24-R-B9FP	25,000	SP010402505124A	7.97	<b>5.90</b>
4"	1/4"	3/8"	30	A30-R-BF	25,000	SP010402505136A	7.60	<b>5.60</b>
4"	1/4"	3/8"	46	A462-S-BF	25,000	SP010402505146A	7.97	<b>5.90</b>
4"	1/4"	5/8"	36	A36-R-BF	25,000	SP010402505136A	16.44	<b>12.10</b>
4"	1/4"	5/8"	46	A462-S-BF	25,000	SP010402505146A	7.97	<b>5.90</b>

25168

## SURF PRO Air Cooled Quick Change Holder Pads

- Serated pad air cools disc for reduced loading and longer disc life
- Multiple mounting option available
- 1/4-20 Thread x 1/4" Dia. Mandrel, 2" OAL
- 3/8-24 and 5/8-11 adaptor also available



Diameter	Disc Mount	Order No.	Regular Price	SALE
1 1/2"	TR	SP24QCH15TR14SC	16.80	<b>11.00</b>
1 1/2"	TS	SP24QCH15TS14SC	16.80	<b>11.00</b>
2"	TR	SP24QCH20TR14SC	17.49	<b>11.00</b>
2"	TS	SP24QCH20TS14SC	17.49	<b>11.00</b>
3"	TR	SP24QCH30TR14SC	19.78	<b>13.80</b>
3"	TS	SP24QCH30TS14SC	19.78	<b>13.80</b>
4"	TR	SP24QCH40TR14SC	31.99	<b>20.00</b>
4"	TS	SP24QCH40TS14SC	31.99	<b>20.00</b>

25166

## SURF PRO 4-1/2" x 7/8" Arbor Economy Zirconia Flap Discs

- Zirconia abrasive for high cut rate and fast / cool cutting
- Best for welds and blending, rust removal and light deburring on ferrous and non-ferrous metals
- Heavy X-weight cloth and fiberglass
- Type 29 shape for maximum aggression (Recommended to be used at an angle of 15° to 25° for maximum aggression and high cut rate)



Grit	Maximum RPM	Type 29			Type 27		
		Order No.	Regular Price	SALE	Order No.	Regular Price	SALE
36	13,300	SP11FD457A9036Z	4.68	<b>3.50</b>	SP11FD457A7036Z	4.68	<b>3.50</b>
40	13,300	SP11FD457A9040Z	4.68	<b>3.50</b>	SP11FD457A7040Z	4.68	<b>3.50</b>
60	13,300	SP11FD457A9060Z	4.68	<b>3.50</b>	SP11FD457A7060Z	4.68	<b>3.50</b>
80	13,300	SP11FD457A9080Z	4.68	<b>3.50</b>	SP11FD457A7080Z	4.68	<b>3.50</b>

Also available in trimmable back and zirc plus.  
While Supplies Last

22377

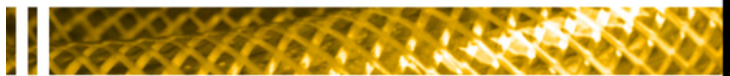
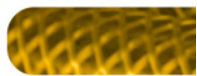
## SURF PRO Aluminum Oxide Shop Rolls

- Ideal for cleaning and deburring metal surfaces
- Convenient packaging
- Flexible cloth backing
- Cut or tear to required length
- 50 Yard rolls



Grit	1"			1 1/2"			2"		
	Order No.	Regular Price	SALE	Order No.	Regular Price	SALE	Order No.	Regular Price	SALE
-	-	-		-	-		SP12SR20CRO	85.22	<b>76.70</b>
40	SP12SR10040A	24.96	<b>22.50</b>	SP12SR15040A	32.45	<b>29.20</b>	SP12SR20040A	46.79	<b>42.10</b>
50	SP12SR10050A	24.46	<b>22.00</b>	SP12SR15050A	35.00	<b>28.60</b>	SP12SR20050A	45.88	<b>41.30</b>
60	SP12SR10060A	23.68	<b>21.30</b>	SP12SR15060A	33.98	<b>30.60</b>	SP12SR20060A	44.51	<b>40.10</b>
80	SP12SR10080A	22.55	<b>20.30</b>	SP12SR15080A	32.37	<b>29.10</b>	SP12SR20080A	42.42	<b>38.20</b>
100	SP12SR10100A	21.94	<b>19.70</b>	SP12SR15100A	31.76	<b>28.60</b>	SP12SR20100A	41.11	<b>37.00</b>
120	SP12SR10120A	21.94	<b>19.70</b>	SP12SR15120A	31.76	<b>28.60</b>	SP12SR20120A	41.11	<b>37.00</b>
150	SP12SR10150A	21.98	<b>19.80</b>	SP12SR15150A	31.74	<b>28.60</b>	SP12SR20150A	41.11	<b>37.00</b>
180	SP12SR10180A	21.94	<b>19.70</b>	SP12SR15180A	31.74	<b>28.60</b>	SP12SR20180A	41.11	<b>37.00</b>
220	SP12SR10220A	21.98	<b>19.80</b>	SP12SR15220A	31.74	<b>28.60</b>	SP12SR20220A	41.11	<b>37.00</b>
240	SP12SR10240A	21.98	<b>19.80</b>	SP12SR15240A	31.74	<b>28.60</b>	SP12SR20240A	41.11	<b>37.00</b>
320	SP12SR10320A	21.98	<b>19.80</b>	SP12SR15320A	31.74	<b>28.60</b>	SP12SR20320A	41.11	<b>37.00</b>
400	SP12SR10400A	21.98	<b>19.80</b>	SP12SR15400A	31.70	<b>28.50</b>	SP12SR20400A	41.11	<b>37.00</b>

25149



**PRM** Right Angle Grinder Surface Prep Kit



**Kit Includes:**

- 20,000 RPM right angle die grinder
- 2" & 3" Conditioning discs
- 2" & 3" Roll on holders
- 1/8" Collet & 1/4" collet
- 10 Pc. stone assortment

Order No.	Regular Price	SALE
PJ752010	\$156.81	<b>\$124.95</b>

22685

**Dynaflex** Dynafile® II Abrasive Belt Machine For 18" Long Belts



**Model 40320**

Grind, deburr, blend and polish, on metal, plastic, fiberglass, composites, rubber, glass and more.

- Includes 11206 Contact Arm for 3/4" W x 18" L abrasive belts
- Ideal for use with coated abrasive and non-woven nylon belts!
- Grind off contact wheel or platen pad. Finish & polish using slack of belt

Belt Length	Belt Width	Maximum RPM	Horsepower	Air Inlet Size	Order No.	Regular Price	SALE
18"	3/4"	20,000	0.50 hp	1/4" NPT	<b>PF3040320</b>	\$1,086.22	<b>\$835.95</b>

2166



### Air Powered Die Grinders

- Mini angle grinder compact
- Lightweight design
- 90° angle head allows flexibility in confined areas



Type	Maximum RPM	Average Air Consumption	Air Inlet Size	Collet/Chuck	Exhaust Type	Order No.	Regular Price	SALE
Right Angle	22,500	11 CFM	1/4" NPT	1/4" 6 mm	Front	<b>PF50CP875</b>	\$211.25	<b>\$169.95</b>

22943



### Safety and Blind Hole Air Guns

- Ergonomic pistol grip and trigger eliminates hand fatigue
- 1/4" NPT inlet
- Maximum operating pressure 120 PSI
- Meets OSHA standards



LW5574BH



LW5574BH



LW5574BH

Tip Type	Features	Model No	Order No.	Regular Price	SALE
Blind Hole	Delivers a high velocity jet of air into deep crevices & blind holes (down to 1/8" dia.) to flush out chips and dirt	74BH006Z	<b>LW5574BH</b>	\$52.19	<b>\$39.20</b>
Jet Guard	Safety air shield protects workers from hazardous chip fly-back	74SK	<b>LW5574SK</b>	\$48.10	<b>\$36.10</b>
Conical	Unique nozzle design reduces noise levels 6-20 dB less than conventional air guns	80WJ	<b>LW5580WJ</b>	\$47.42	<b>\$35.60</b>

23269

## CRESCENT® Adjustable Wrench Taper Handle

- Wider knurl for easier adjustment
- Laser etched scale provides a quick and convenient way to determine fastener size in either english or metric
- Tension spring stabilizes jaw and knurl adjustments
- Alloy steel - heat treated



Overall Length	Jaw Capacity	Order No.	Regular Price	SALE
10"	1 5/16"	KW50AC210VS	47.10	<b>37.70</b>
12"	1 1/2"	KW50AC212VS	53.52	<b>42.80</b>
15"	1 11/16"	KW50AC215VS	98.49	<b>78.80</b>
18"	2 1/16"	KW50AC218VS	128.47	<b>102.80</b>
24"	2 7/16"	KW50AC224VS	278.36	<b>222.70</b>

6587

## CHANNELLOCK® Wire Stripper Cutter

- Strips insulation fast with no damage to wire
- Cuts copper wire clean
- Blades are especially heat treated for long life
- Channellock Blue® comfort grips
- Non Insulated



Overall Length	Order No.	Regular Price	SALE
6"	LB50958	26.53	<b>21.40</b>

6564

## CHANNELLOCK® Oil Filter and PVC Pliers

- High carbon steel construction
- PermaLock fastener eliminates nut and bolt failure
- Right angle teeth help ensure a strong grip
- Channellock Blue® comfort grip handles



Overall Length	Minimum Capacity	Maximum Capacity	Order No.	Regular Price	SALE
9"	1 3/4"	3 1/2"	LB50209	32.09	<b>25.90</b>
12"	2-1/2"	3-3/4"	LB502012	45.24	<b>37.60</b>
12"	2 3/4"	4 1/4"	LB50212	44.39	<b>35.80</b>
15 1/2"	2 1/2"	5 1/2"	LB50215	53.27	<b>42.90</b>

† 30 Degree angled head

6556

## Eklind® Balldriver Standard & Metric Sets

- Standard & Metric-Long Arm
- Alloy steel- heat treated for optimum strength and ductility
- Sets come in plastic holder that firmly retains the keys in size marked holes
- Balldriver provides a 25° angle entry



Number of Pieces	Sizes Included	Order No.	Regular Price	SALE
9	1.5 mm, 2 mm, 2.5 mm, 3 mm, 4 mm, 5 mm, 6 mm, 8 mm, 10 mm	KM5013609	36.35	<b>11.25</b>
13	.050", 1/16", 5/64", 3/32", 7/64", 1/8", 9/64", 5/32", 3/16", 7/32", 1/4", 5/16", 3/8"	KM5013213	43.64	<b>13.40</b>

6594

## Eklind® 22 Pc. Ball-Hex-L™ Set Fractional & Metric

- Sets come in plastic holder that firmly retains the keys in size marked holes
- Ball driver provides a 25° angle entry
- Heat treated steel
- Sizes: .050 - 3/8" & 1.5 - 10mm



Number of Pieces	Sizes Included	Order No.	Regular Price	SALE
22	.050, 1/16, 5/64, 3/32, 7/64, 1/8, 9/64, 5/32, 3/16, 7/32, 1/4, 5/16, 3/8, 1.5, 2, 2.5, 3, 4, 5, 6, 8, & 10	KM5013222	80.00	<b>24.50</b>

23145



## Wiss Shears & Scissors

### Easy Snip Utility Shears

- Quality 420 stainless steel blade
- Cushion grip handle
- Thumb latch for secure storage
- Lightweight
- Wire cutting notch in lower blade

### Heavy Duty Industrial Shears

- Hot drop forged polished blades, made of quality cutlery steel
- Black handles

### Electrician's Scissors

- Double stripping notch for 19 gauge (.035) and 23 gauge (.022) wire
- Hot drop forged solid steel & nickel plated
- Scraper and file on back edge of blade



LA50WEZSNIP



LA5020  
LA5022



LA50175E5

Overall Length	Blade Length	Type	Order No.	Regular Price	SALE
8 1/2"	4"	Easy Snip Shears	LA50WEZSNIP	30.02	<b>22.50</b>
10 1/2"	4 3/4"	Heavy Duty Industrial Shears	LA5020	85.78	<b>64.30</b>
12 1/2"	6"	Heavy Duty Industrial Shears	LA5022	98.64	<b>74.00</b>

## CRESCENT Lufkin Shockforce Tapes

- Every Shockforce and Shockforce Nite Eye is made to last and has a two-sided, 14-foot standout blade and diamond-abrasive coated and hook to help you measure faster.



Measuring Tape						
Blade Length	Blade Width	Blade Color	Case Color	Order No.	Regular Price	SALE
8 m, 26'	1-3/16'	Black	Black	MZ50L1025CB02	42.81	<b>34.20</b>

Shockforce Nite Eye Dual Sided Tape Measure						
Blade Length	Blade Width	Blade Color	Case Color	Order No.	Regular Price	SALE
16'	1-3/16 in	Black Blade with Hi-Viz Green Markings	Black	MZ50L1116B02	42.81	<b>34.20</b>
25'	1-3/16 in	Black Blade with Hi-Viz Green Markings	Black	MZ50L1125B02	53.52	<b>42.80</b>
35'	1-3/16 in	Black Blade with Hi-Viz Green Markings	Black	MZ50L1135B02	68.51	<b>54.80</b>

Shockforce Dual Sided Tape Measure						
Blade Length	Blade Width	Blade Color	Case Color	Order No.	Regular Price	SALE
8 m	1-3/16 in	Black Blade with Hi-Viz Green Markings	Black	MZ50L1125CMEB02	53.52	<b>42.80</b>
5 m	1-3/16 in	Black Blade with Hi-Viz Green Markings	Black	MZ50L1116CMEB02	42.81	<b>34.20</b>
16'	1-3/16 in	Yellow Blade with Black Markings	Black	MZ50L111602	42.81	<b>34.20</b>
5 m	1-3/16 in	Yellow Blade with Black Markings	Black	MZ50L1116CME02	42.81	<b>34.20</b>
25'	1-3/16 in	Yellow Blade with Black Markings	Black	MZ50L112502	53.52	<b>42.80</b>
35'	1-3/16 in	Yellow Blade with Black Markings	Black	MZ50L113502	68.51	<b>54.80</b>
10 m	1-3/16 in	Yellow Blade with Black Markings	Black	MZ50L1135CME02	68.51	<b>54.80</b>
8 m	1-3/16 in	Yellow Blade with Black Markings	Black	MZ50L1125CME02	53.52	<b>42.80</b>

## MAG-MATE Inspection Mirror/Magnet

### Combination Tools

- Ideal to see behind, underneath or around machinery
- Telescoping mirror for versatility
- Powerful rare earth magnets on the opposite end
- Use the magnet to retrieve metal items or as a magnetic base to hold the inspection mirror in place



Mirror Width	Mirror Length	Material	Overall Length	Extended Length	Pull	Order No.	Regular Price	SALE
2"	2"	Glass	6 1/4"	28"	2 lbs	NE70301G240	23.56	17.70
1 1/2"	1 1/2"	Glass	6"	23 1/2"	2 lbs	NE70306G240	32.07	24.10
3"	2"	Stainless	8 1/4"	38"	7 lbs	NE70314S925	67.95	51.00
1 1/4"	2"	Glass	6"	24 1/4"	2 lbs	NE70315G240	32.07	24.10
2 1/2"	1 7/8"	Acrylic	7 3/4"	32 1/2"	12 lbs	NE70321A931	70.30	52.70
-	-	Glass	14 1/4"	14 1/4"	20 lbs	NE70375G990	124.81	93.60

4044

## BESSEY MAG-MATE Magnetic Retrievers

- Designed with a rare earth magnet 6 times the power of a regular magnet
- 16" & 36" sizes available with a 26 oz. dump shipped out
- Both sizes 1" diameter with a magnetic field of 7-1/2"



BrandName	Length	Diameter	Order No.	Regular Price	SALE
Bessey	16"	7 1/2"	SG75MW1	77.09	69.40
Mag-Mate	15"	7 1/2"	NE7020125	127.70	95.80
Mag-Mate	36"	7 1/2"	NE7020150	202.68	152.00

1376

## IRWIN QUICK-GRIP Bar Clamps

- Handle and jaws engineered for strength and lightweight
- High carbon, heat treated steel bar
- Soft, pliable pads protect fine finishes
- Quick release trigger
- KX5000546 is a Mini Bar Clamp



Maximum Opening	Throat Depth	Reach	Order No.	Regular Price	SALE
6"	3 1/4"	7 1/2"-20 5/8"	KX5000546	25.89	16.80
6"	3 1/4"	7 1/2"-14 5/8"	KX50506QC	44.89	29.20
12"	3 1/4"	7 1/2"-26 5/8"	KX50512QC	52.13	33.90
18"	3 1/4"	7 1/2"-32 5/8"	KX50518QC	58.36	37.90
24"	3 1/4"	7 1/2"-44 5/8"	KX50524QC	63.99	41.60
36"	3 1/4"	7 1/2"-58 5/8"	KX50536QC	75.86	49.30

1230

## IRWIN VISE-GRIP "The Original" Locking Pliers

- Curved and straight jaws
- Wire cutters available
- Tremendous pressure applies when closed
- Guarded release trigger to protect against accidental release
- Hardened teeth to grip from any angle



Curved						
Overall Length	Jaw Capacity	Jaw Thickness	Wire Cutter	Order No.	Regular Price	SALE
4"	15/16"	1/4"	Yes	KX504WR	24.35	17.00
5"	1 1/8"	1/4"	Yes	KX505WR	34.31	24.00
7"	1 1/2"	5/16"	Yes	KX507WR	35.21	25.00
7"	1 5/8"	5/16"	-	KX507CR	35.21	25.00
10"	1 7/8"	3/8"	Yes	KX5010WR	35.86	26.00
10"	1 7/8"	3/8"	-	KX5010CR	35.86	26.00

Straight						
Overall Length	Jaw Capacity	Jaw Thickness	Wire Cutter	Order No.	Regular Price	SALE
7"	1 5/16"	5/16"	No	KX507R	35.21	25.00
10"	1 3/4"	7/16"	No	KX5010R	35.86	26.00

6796



## Mill & Knife Hand Files - Smooth & Bastard Styles

- **Knife** files are for use on slots, keyways and acute angles. Knife files are double cut on the "knife edge" with a safe (uncut) back and taper toward the point in width and thickness.
- **Mill** files are excellent for a wide range of applications such as sharpening, draw filing, lathe work and general shop use. Mill files are single cut on the sides and edges, and taper towards the point in width.
- Bastard cut, a coarse file designed for fast removal of stock material
- Smooth cut, a fine file designed for making an almost smooth surface



Mill



Knife

Knife						
	Bastard			Smooth		
Overall Length	Order No.	Regular Price	SALE	Order No.	Regular Price	SALE
4"	FR5006711	33.97	<b>28.90</b>	FR5006773	35.64	<b>30.30</b>
6"	FR5006804	39.95	<b>34.00</b>	FR5006867	47.86	<b>40.70</b>
8"	FR5006898	46.27	<b>39.30</b>	FR5006961	52.08	<b>44.30</b>
10"	FR5006992	54.66	<b>46.50</b>	FR5007054	62.33	<b>53.00</b>

Mill						
	Bastard			Smooth		
Overall Length	Order No.	Regular Price	SALE	Order No.	Regular Price	SALE
4"	FR5008243	12.72	<b>10.80</b>	FR5008306	18.81	<b>16.00</b>
6"	FR5008354	12.57	<b>10.70</b>	FR5008416	19.34	<b>16.40</b>
8"	FR5008497	15.10	<b>12.80</b>	FR5008560	22.77	<b>19.40</b>
10"	FR5008642	19.38	<b>16.50</b>	FR5008704	26.87	<b>22.80</b>
12"	FR5008737	32.00	<b>27.20</b>	FR5008799	37.82	<b>32.10</b>
14"	FR5008832	42.47	<b>36.10</b>	FR5008894	52.96	<b>45.00</b>

24059



## Mill & Flat Hand Files - Bastard Cut

- Bastard file - a coarse file designed for fast removal of stock material

### Flat Files:

- Excellent for "Hogging" or rapid stock removal
- Double cut on both sides, single cut on the edges and taper toward the point in width

### Mill Files:

- Excellent for a wide range of applications such as sharpening, draw filing, lathe work and general shop use
- Single cut on the sides and edges, and taper towards the point in width



Flat



Mill

	Flat		
Overall Length	Order No.	Regular Price	SALE
4"	FR5003367	17.36	<b>14.80</b>
6"	FR5003467	18.52	<b>15.70</b>
8"	FR5003566	23.06	<b>19.60</b>
10"	FR5003665	28.02	<b>23.80</b>
12"	FR5003764	38.99	<b>33.10</b>
14"	FR5003863	54.47	<b>46.30</b>

24057



## Replacement Blades



Application	Blade Type	Shaviv Equivalent	Order No.	Regular Price	SALE
Steel, Aluminum, Plastic, Carbide	B10CO	None	FN55B10CO	3.64	<b>2.90</b>
Steel, Aluminum, Plastic	N1	B10	FN55N1	2.84	<b>2.30</b>
Steel, Aluminum, Plastic, Solid Carbide	N1C	B10C	FN55N1C	10.26	<b>8.20</b>
Steel, Aluminum, Plastic, Diamond Coated	N1D	None	FN55N1D	17.37	<b>13.90</b>
Steel, Aluminum, Plastic - Left Handed	N1LH	None	FN55N1LH	4.02	<b>3.20</b>
High Wear Materials, TiN Coated	N1TiN	B10P	FN55N1TiN	3.74	<b>3.00</b>
Brass, Cast Iron	N2	B20	FN55N2	2.85	<b>2.30</b>
Brass, Cast Iron	N2C	B20C	FN55N2C	10.28	<b>8.20</b>
Remove External & Internal Burrs	N3	B30	FN55N3	3.67	<b>2.90</b>
Inside Cross Holes and Back Side of Walls	N6	B60	FN55N6	5.55	<b>4.40</b>
Steel, Aluminum, Plastic	S10	E100	FN55S10	3.77	<b>3.00</b>
Stainless Steel	S100	None	FN55S100	4.36	<b>3.50</b>
Small Holes	S101	None	FN55S101	3.86	<b>3.10</b>
Small Holes - Left Handed	S101LH	None	FN55S101LH	4.58	<b>3.70</b>
Steel, Aluminum, Plastic, Diamond Coated	S10D	None	FN55S10D	17.85	<b>14.30</b>
Steel, Aluminum, Plastic - Left Handed	S10LH	None	FN55S10LH	5.16	<b>4.10</b>
High Wear Materials, TiN Coated	S10TiN	E100P	FN55S10TiN	4.77	<b>3.80</b>
Very Small Holes	S150	None	FN55S150	4.30	<b>3.40</b>
Very Small Holes, TiN Coated	S150-TiN	None	FN55BK3112	4.97	<b>4.00</b>
Brass, Cast Iron	S20	E200	FN55S20	4.09	<b>3.30</b>
Fine Point for Brass + Cast Iron	S202	None	FN55S202	4.30	<b>3.40</b>
Remove External & Internal Burrs	S30	E300	FN55S30	4.13	<b>3.30</b>
For Straight Edges	S35	E350	FN55S35	4.22	<b>3.40</b>
Inside Cross Holes and Back Side of Walls	S60	E600	FN55S60	5.84	<b>4.70</b>

10109



## 007

- Deburring, cleaning, finishing and countersinking
- Includes: RB handle, o-ring blade, RD16.5 RotoDrive countersink, EX18 External RotoDrive countersink, thread cleaner blade, S100 blade, S150 blade



Order No.	Regular Price	SALE
FN55007	84.26	<b>67.40</b>

10065



## Ceramic Convexed Cera-Cut & Blades

- Ideal for all plastic materials, soft metals, surface scraping and parting line deflashing
- Blade can be replaced
- Includes: Cera-Cut handle and 250mm convexed radius blade



Included	Order No.	Regular Price	SALE
Cera-Cut Handle / 250 mm Convex Blade	FN55CR2000	48.59	<b>38.90</b>

10069



## Countersink, Holders and Blades



Included	Order No.	Regular Price	SALE
NogaGrip 3 Handle / C Holder / C20 Countersink Blade (20 mm)	FN55NG3100	45.87	<b>36.70</b>

22470



## NG Handles & S & N Holders



FN55EL01003



FN55EL02003



FN55NG1000  
FN55NG2000  
FN55NG3000

For Use With	Type	Order No.	Regular Price	SALE
N Blades	N Blade Holder	FN55EL01003	9.66	<b>7.70</b>
S Blades	S Blade Holder	FN55EL02003	9.66	<b>7.70</b>
S Blades	NG-1 Handle	FN55NG1000	12.07	<b>9.70</b>
N Blades	NG-2 Handle	FN55NG2000	12.40	<b>9.90</b>
All Blade Holders	NG-3 Handle	FN55NG3000	12.40	<b>9.90</b>

24075

## **OLFA** Safety Carton Cutter

- A uniquely designed safety cutter
- Blade automatically self retracts when not in use
- Right or left hand use
- World famous genuine OLFA® blade is honed for maximum cutter performance



Order No.	Regular Price	SALE
FS6040062	17.60	<b>12.30</b>

24223

## **PRM** 2 Way ERGO Torx T-Handle Drivers

- Two drive ends for multiple driving angles
- S2 modified steel through hardness for maximum durability
- Ergonomic dual handle
- Storage hook hole
- Satin chrome finish
- Lifetime warranty against mfg defect



Torx Size	Blade Length	Order No.	Regular Price	SALE
T10	4"	KN7010010	8.20	<b>5.50</b>
T15	4"	KN7010015	8.71	<b>5.90</b>
T20	4"	KN7010020	8.71	<b>5.90</b>
T25	6"	KN7010025	9.62	<b>6.50</b>

6950

## **PRM** Dead Blow Hammers

- Steel shot inside head eliminates rebound, conserving energy of each blow
- High-impact poly jacket surrounds the all-steel handle\* and head, preventing marring of surfaces
- Diamond textured handle for non-slip grip
- Made with lead-free and 3P phthalate-free materials
- Lifetime warranty against manufacture defects



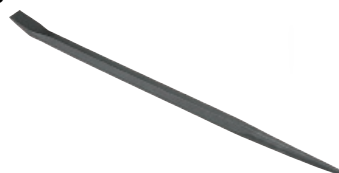
Head Weight	Head Diameter	Head Length	Overall Length	Order No.	Regular Price	SALE
1LB	1-7/16	3-5/8	11-3/4	PR0210100	35.03	<b>24.95</b>
1.5LB	1-7/8	3-5/8	12	PR0210150	40.87	<b>28.95</b>
2LB	2	4	13	PR0210200	46.71	<b>32.95</b>
2.5LB	2-1/4	4-1/4	14-1/2	PR0210250	54.15	<b>37.95</b>
3LB	2-1/2	4-5/8	15	PR0210300	39.68	<b>27.95</b>
3.5LB	2-5/8	5	15-1/2	PR0210350	42.59	<b>29.95</b>
6LB	3-5/8	6	36-1/2	PR0210600	142.09	<b>99.95</b>
10LB	4	8	36-7/8	PR0211000	189.44	<b>132.95</b>

\* 6 lbs and 10 lbs have yellow fiberglass handle

22449

## **PROTO** Aligning Pry Bars

- Application: for prying, positioning, and aligning applications
- Black oxide finish to help prevent rust corrosion; extending tool life and performance



Overall Length	Overall Width	Model No	Order No.	Regular Price	SALE
16"	1/2"	J2116	KP4260650	28.43	<b>22.20</b>
18"	5/8"	J2120	KP4260655	39.58	<b>30.90</b>
24"	3/4"	J2124	KP4260660	52.66	<b>41.10</b>
30"	7/8"	J2125	KP4260665	89.38	<b>69.80</b>
38"	7/8"	J2127	KP4260700	119.50	<b>107.60</b>
42"	1"	J2128	KP4260705	167.70	<b>150.90</b>
60"	1-1/4"	J2129	KP4260710	177.52	<b>159.80</b>

7192

## **PROTO** Large Handle Pry Bars

- Large four-sided handle for a better grip and added comfort



Overall Length	Overall Width	Model No	Order No.	Regular Price	SALE
14-1/2"	5/8"	J2140	KP4260685	33.51	<b>28.30</b>
17-1/2"	5/8"	J2142	KP4260680	42.29	<b>35.60</b>
28"	3/4"	J2146	KP4260675	56.28	<b>47.70</b>
32"	3/4"	J2148	KP4260670	71.96	<b>61.00</b>
36"	5/8"	J2150	KP4260690	131.28	<b>111.30</b>

7287



## PROTO 12Pc Punch and Chisel Set

- Made from S2 steel and specially heat-treated for greater strength and durability
- Modified parabolic striking end to help reduce mushrooming and chipping
- Black oxide finish to help prevent rust corrosion; extending tool life and performance
- A polished identification panel on one of the flats is marked with the tool number and size in a black inlay
- Set offers a wide range of sizes to handle a variety of jobs
- Includes a pouch for convenient storage solution



Model No	Order No.	Regular Price	SALE
J2	KP4281760	138.88	<b>125.00</b>

7068

## PROTO Pear Head Ratchets

- Robust 24 tooth design with 15° arc swing
- Tool steel drive gear for strength and durability
- Low profile head for access in constricted areas
- Reversing lever design for quick, one handed operation
- Knurled slip-resistant grip



Full Polish Chrome



Black Oxide

Drive Size	Overall Length	Full Polish Chrome			Black Oxide		
		Order No.	Regular Price	SALE	Order No.	Regular Price	SALE
1/4"	5"	KP4240105	46.04	<b>36.90</b>	KP4240140	43.75	<b>35.00</b>
3/8"	7"	KP4240110	63.57	<b>50.90</b>	KP4240145	60.37	<b>48.40</b>
3/8"	11"	KP4240115	76.30	<b>61.10</b>	KP4240120	72.49	<b>58.00</b>
1/2"	10"	KP4240125	98.07	<b>78.60</b>	KP4240150	93.20	<b>74.60</b>
1/2"	16"	KP4240130	105.94	<b>84.80</b>	KP4240155	93.67	<b>80.60</b>
3/4"	20"	-	-	-	KP4240160	218.67	<b>159.90</b>

7207

## PROTO Fixed Head Micrometer Torque Wrenches



- Calibrated to +/- 4% in clockwise direction and +/- 6% counter clockwise direction at 20% to 100% of full scale
- Manufactured to meet standard industrial torque applications, general industry, heavy equipment, and maintenance



Drive Size	Torque Range Ft-Lbs	Overall Length	Model No	Order No.	Regular Price	SALE
1/4"	40-200 inch/lbs	11 13/64"	J6061C	KP4220750	327.47	<b>275.60</b>
3/8"	16-80 feet/lbs	14 23/32"	J6005C	KP4220735	328.57	<b>276.50</b>
3/8"	200-1000 inch/lbs	14 41/64"	J6065C	KP4220760	351.40	<b>301.20</b>
1/2"	30-150 feet/lbs	20 9/32"	J6015C	KP4220745	368.18	<b>313.20</b>
1/2"	50-250 feet/lbs	25 55/64"	J6013C	KP4220740	412.71	<b>353.70</b>

7264

## WORLD CLASS QUALITY 5 Pc. CBN Needle File Set†

- For finishing harder materials such as cast iron, nickel, etc. with RC50 or higher
- Available in medium grit only



Diamond Length	Overall Length	Grade	Order No.	Regular Price	SALE
3"	5 1/2"	Medium	FT605BFM	143.18	<b>93.10</b>

†Sets consist of 1 ea. of the shapes as indicated above

184

## TITAN 3 Pc. Damaged Screw Extractor Set

- For use with removing size 4-14 screws and bolts up to 5/16"
  - Double sided extractor tips remove stripped screws and bolts
  - Drill out, flip bit and extract screw
- Includes (3) double sided extractors:**
- #1: Screw size 4-7, SAE bolt size 7/32", mm bolt size 5mm
  - #2: Screw size 8-10, SAE bolt size 1/4", mm bolt size 6mm
  - #3: Screw size 11-14, SAE bolt size 5/16", mm bolt size 8mm



Order No.	Regular Price	SALE
KP8211215	25.29	<b>17.70</b>

7887

## SPELLMACO Transfer Punch Set with Indexed Stand

- 28 Punch set consists of: (1) each of
- punch sizes 3/32" thru 1/2" x 64ths plus
- 17/32"



Order No.	Regular Price	SALE
KH50317	256.69	<b>192.50</b>

7673

**STANLEY** **Folding Utility Knife**

- One-handed open/close
- Tool-free blade changes
- Aluminum design for durability and light weight
- Stainless-steel belt clip for convenience
- Accepts standard utility and hook blades



Overall Length	Blade Length	ManufacturerNo	Order No.	Regular Price	SALE
5 3/4"	2 7/16"	10-855	KP431950	25.82	<b>18.95</b>

7745

**wiha** **1/4" Magnetic Bit Holder with Non-Slip Grip**

- 1/4" x 125mm (5")
- Overall length 8.9"
- Safe, non-slip high torque grip
- Holds standard 1/4" insert bits



Order No.	Regular Price	SALE
KN5452650	35.04	<b>21.70</b>

7933

**wiha** **Cushion Grip Screwdrivers TORX® Drivers**

- Ergo molded on cushion grip for maximum torque - molded on handle for permanent bond
- Blades of Wiha exclusive CRM-72 tool steel
- Through hardened for maximum durability
- Precision machined exact fit TORX® tips
- Hard chromed surface finish for extreme wear



Tip Size	Order No.	Regular Price	SALE
T6	KN5436266	9.39	<b>6.00</b>
T7	KN5436268	9.15	<b>5.80</b>
T8	KN5436270	9.15	<b>5.80</b>
T9	KN5436272	10.17	<b>6.50</b>
T10	KN5436274	10.22	<b>6.50</b>
T15	KN5436276	11.01	<b>7.10</b>
T20	KN5436278	11.33	<b>7.20</b>
T25	KN5436280	13.46	<b>8.60</b>

25525

**wiha** **Magnetizer/Demagnetizer**

- Use (+) opening to magnetize
- Use (-) opening to demagnetize



Order No.	Regular Price	SALE
KN5440010	10.62	<b>6.90</b>

25514

**wiha** **8 Pc. Hex Soft Grip T-Handle Balldriver Sets**

- Available in fractional or metric
- Two tools in one
- Dual drive



Sizes Included	Order No.	Regular Price	SALE
2 mm, 2.5 mm, 3 mm, 4 mm, 5 mm, 6 mm, 8 mm, 10 mm	KN5433496	115.09	<b>73.60</b>
1/8", 9/64", 5/32", 3/16", 7/32", 1/4", 5/16", 3/8"	KN5433498	108.21	<b>69.20</b>

25501

**Young Bros.** **Heavy Duty Combination Stamps Sets**

- 36 Characters: 27 Letters (A-Z), 9 (Numbers)



Character Size	Square Size	Overall Length	Weight	Order No.	Regular Price	SALE
1/32"	1/4"	2 3/8"	2 lbs	KF5000363	334.77	<b>251.50</b>
1/16"	1/4"	2 3/8"	2 lbs	KF5001363	264.85	<b>198.90</b>
3/32"	5/16"	2 1/2"	3 lbs	KF5002363	264.85	<b>198.90</b>
1/8"	5/16"	2 1/2"	3 lbs	KF5003363	264.85	<b>198.90</b>
5/32"	3/8"	2 3/4"	4 lbs	KF5004363	298.18	<b>224.20</b>
3/16"	3/8"	2 3/4"	4 lbs	KF5005363	314.12	<b>235.70</b>
1/4"	7/16"	3"	6 lbs	KF5006363	361.95	<b>271.50</b>
5/16"	1/2"	3"	8 lbs	KF5007363	452.88	<b>339.90</b>
3/8"	9/16"	3 1/8"	11 lbs	KF5008363	519.91	<b>389.40</b>
1/2"	3/4"	3 3/4"	28 lbs	KF5009363	827.50	<b>619.90</b>

8077



## Co-Axial Centering Indicators

### For Quick Centering on Milling and Boring Set-UP

Using the Table X and Y Controls, move the workpiece until the indicator needle is stationary. Use in vertical or horizontal milling operations. Quickly changes from internal to external.

#### Features:

- Operates at any angle
- Dial remains stationary while spindle rotates
- Internal or external diameters
- Set includes internal feeler, external feeler, retaining arm and case
- Capacity: ID 5/32 to 4-1/4" Dia.; OD - 0 to 4-1/4" Dia.

MADE IN THE USA



Order No.	Regular Price	SALE
NB72801	717.30	645.60

3341

## Fowler PLUS Digi Level

#### Features:

- Super large 18mm backlit display
- Includes a 6" straight edge with beveled edge and 1/64ths graduations
- V's on top and bottom for measuring on cylindrical surfaces
- Embedded magnets on bottom base for vertical and horizontal hold
- IP65 protection
- Rechargeable battery
- USB charging cable supplied
- Auto inverting display



Order No.	Regular Price	SALE
NA55544225500	244.71	215.95
NA5554422550BT	251.80	184.20

29361



## Universal Magnetic Base

- 132 Lbs. of magnet pull
- Unique 3 dimensional central locking mechanism is used to easily set up gages into required position
- Includes fine adjustment feature
- Will accept all dovetail and AGD stem indicators



Order No.	Regular Price	SALE
NL80TMBUM	91.94	55.20

4867

## Fowler Electronic Calipers

- Stainless steel frame
- Large easy-to-read display
- Resolution: .0005"/0.01mm
- Direct inch/metric conversion
- 4-Way measuring
- Complete in case



Measuring Range	Order No.	Regular Price	SALE
0-6" / 0-150 mm	NA55541011501	78.08	63.95
0-12" / 0-300 mm	NA55541013001	178.37	150.05

3791

**GENERAL** **Button Type Alnico Magnets**

- Button shaped magnet has almost unlimited applications
- Retrieves screws and steel parts
- Center hole in top for easy fastening



Diameter	Height	Average Pull Force (lb)	Thread Size	Order No.	Price	SALE
1/2"	3/8"	1.5	1/8"	NE50372A	8.86	<b>6.60</b>
1 1/4"	3/4"	14	3/16"	NE50372D	37.12	<b>27.80</b>
1 1/2"	7/8"	18.5	1/4"	NE50372E	60.64	<b>45.50</b>

1134

**Starrett** **Edge Finders**

**827 Series**

- Edge finders accurately locate working edges, shoulders, grooves, center points and scribed lines
- Hardened and centerless ground to precision tolerances



Style	Shank	Tip Diameter	End Type	Order No.	Regular Price	SALE
Edge	3/8"	0.200"	Single End	MV7053062	48.00	<b>44.60</b>
Edge/Center	1/2"	0.200" x Point	Double End	MV7053063	59.00	<b>54.90</b>
Edge	10 mm	6 mm	Single End	MV7056041	49.00	<b>45.60</b>

5028

**Starrett** **436 Series Outside Micrometers**

- .0001" Graduation
- Staggered lines and distinct, quick reading figures on sleeve
- Every thousandth numbered
- Black enamel finished frames
- Satin chrome finish on sleeve and ratchet thimble
- Spindle lock and carbide face



Minimum Measurement	Maximum Measurement	Thimble Type	Model No	Order No.	Regular Price	SALE
0"	1"	Ratchet	T436.1XRL-1	MV7067997	246.00	<b>228.80</b>
1"	2"	Ratchet	T436.1XRL-2	MV7068005	297.00	<b>276.20</b>
2"	3"	Ratchet	T436.1XRL-3	MV7068013	374.00	<b>347.80</b>

5117

**Starrett** **Little Giant Jack Screw Set S190 Model**

- Level work on plainer bed, drill press, mills ext.
- 1,000 Lb. capacity
- 20 Pitch screw for fine adjustment
- Complete with all accessories



Order No.	Regular Price	SALE
MV7050680	120.00	<b>108.00</b>

5071



## Mitutoyo Pitch Gages

- Pitch size stamped on each gage



Measuring Range	Number of Leaves	Thread Angle	Order No.	Regular Price	SALE
4"-42"	30	60°	MT80188-111	54.25	<b>43.30</b>
4"-42"	51	60°	MT80188-151	92.30	<b>73.70</b>
0.40 mm-7.00 mm	18	-	MT80188-121	43.49	<b>34.70</b>
0.40 mm-7.00 mm	21	-	MT80188-122	72.34	<b>57.80</b>

4186



## Replacement Magnetic Bases

- These magnetic base can be attached in various positions to any attractive metal surface.
- Switchable On/Off
- For Noga DG style indicator holders



Pull Force	Base Width	Base Length	Base Height	Order No.	Regular Price	SALE
180 lbf	2"	2 3/8"	2 3/16"	FN60DG0036	35.55	<b>28.40</b>
225 lbf	2"	3"	2 3/16"	FN60DG0038	66.67	<b>53.30</b>
290 lbf	2"	4 3/4"	2 3/16"	FN60DG0039	97.79	<b>78.20</b>

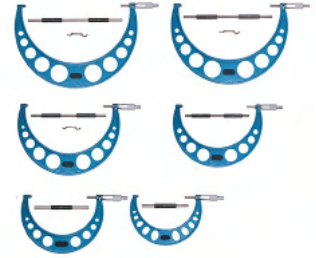
4288



## Large Mechanical Outside

### Micrometer Sets

- Carbide tipped measure surface
- Graduation: 0.0001"
- Case, Wrench, Standards included
- 1 Year Warranty



Measuring Range	Order No.	Regular Price	SALE
6"-12"	PC21OSMS6121	1,066.55	<b>639.90</b>
0"-12"	PC21OSMS0121	1,838.56	<b>1,103.10</b>

29920



## Absolute Electronic Calipers

### with Output

- Absolute encoding technology memorize origin zero
- Data output port (USB/SPC kit optional)
- IP54 protection against water drops and dust
- Inside & outside measures
- Hardened stainless steel with precision lapped finish
- Replacement battery: KA56ECR2032
- 1 Year Warranty



Measuring Range	Resolution	Inside Jaw Depth	Order No.	Regular Price	SALE
0-6" / 0-150 mm	0.0005" / 0.01mm	1-9/16"	PC20E-C061505AB	128.43	<b>77.10</b>
0-12" / 0-300 mm	0.0005" / 0.01 mm	2-1/2"	PC20E-C123005AB	238.13	<b>142.90</b>

4431



## Shockproof Dial Calipers

- Tough, shockproof design
- .100" per revolution
- Covered rack
- Inside, outside, step & depth measurement
- Hardened stainless steel rack
- Supplied with storage case



Measuring Range	Graduation	Inside Jaw Depth	Range Per Revolution	Dial Face Color	Order No.	Regular Price	SALE
0-6"	0.001"	1-9/16"	0.1"	White	PC21DC06SP	95.45	<b>57.30</b>
0-8"	0.001"	1-15/16"	0.1"	White	PC21DC08SP	142.98	<b>85.80</b>
0-12"	0.001"	2-1/2"	0.1"	White	PC21DC12SP	185.11	<b>111.10</b>

4800



**PRC CHECK** Magnetic Dial Protractor with

**Punch**

- Range: 360° (90° x 4)
- Resolution: 1°
- Magnet insert on both inside and bottom of the legs
- Hardened steel center punch
- Mark center of flat, square, or round stock
- 1 Year Warranty



Order No.	Regular Price	SALE
PC23MP490VO	127.38	<b>76.40</b>

4691

**PRC CHECK** Central Lock Uni-versal Magnetic Base

- Magnetic base indicator holder with triple-jointed arm
- Three adjustable joints controlled by a single knob
- Powerful compact magnetic base
- Positive On/Off switch
- 1 Year Warranty



Order No.	Price	SALE
PC21CLMB7FA	82.95	<b>49.80</b>

4490

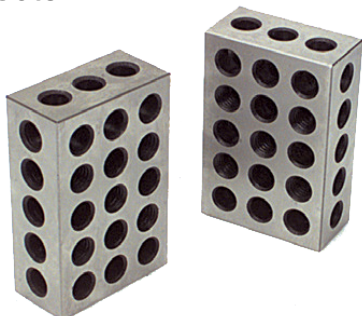
**PRC CHECK** Tri-Block Sets

**Premium 1-2-3 Block Set:**

- Tolerance .0001" - .0003"
- Fitted plastic case

**Economy Tri Blocks:**

- Hardened 55 to 62 Hrc
- Tolerance .0003" to .0005" (0.005mm to 0.010mm for metric blocks)



Economy Tri Block					
Overall Width	Overall Length	Overall Height	Order No.	Regular Price	SALE
1"	2"	3"	NM52E123	26.05	<b>18.20</b>
25 mm	50 mm	75 mm	NM52E25M	43.86	<b>26.30</b>
2"	4"	6"	NM52PR246	262.37	<b>157.40</b>

Tri Block Set					
Overall Width	Overall Length	Overall Height	Order No.	Regular Price	SALE
1"	2"	3"	NM52PR123	59.82	<b>41.90</b>

4371

**PRC CHECK** Magnetic Base Flexible Arm

**Flexible Arm:**

- With lever lock
- Accepts all AGD indicators
- Offers easy cam lever locking
- Total arm length 12"
- Magnet has 130 lbs holding power
- Case included

**Chrome Plated Flex Arm:**

- Corrosion resistant chrome plated flex arm
- 130 lbs pull magnet
- Holds rigidly in almost any position
- V-base for mounting on rounded surfaces
- 1 Year Warranty



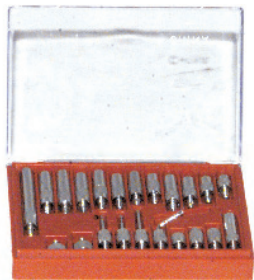
Pull Force	Features	Order No.	Regular Price	SALE
85 lbf	Chrome, Flexible Arm	PC21MBCF130	87.56	<b>52.50</b>

4244



## PROCHECK Economy Select-A-Point Kit

- A complete set of 22 different points, increasing the versatility of your indicators
- Fits all AGD 1, 2, 3, 4 drop style indicators



Order No.	Regular Price	SALE
NB75VP22SP	16.43	9.90

4797

## PROCHECK Quadruple V-Blocks

- Made from seasoned closed grained cast iron
- Universal V-block consisting of four different sized grooves
- Supplied in pairs



Overall Width	Overall Height	Overall Length	Capacity	Order No.	Regular Price	SALE
1 3/8"	3 3/4"	2 3/4"	3/4", 1 3/16", 1 9/16", 2"	NG54QVB1	87.92	52.80
1 3/16"	4"	4"	3/4", 1 3/16", 1 9/16", 2"	NG54QVB2	96.83	67.80
1 3/8"	4 3/4"	4 3/4"	1 3/16", 1 9/16", 2", 3 3/8"	NG54QVB3	134.76	94.30
2 3/8"	4 3/4"	4 3/4"	1 3/16", 1 9/16", 2", 2 3/8"	NG54QVB4	222.01	155.40

4771

## Fowler 5 Pc. Technical Measuring Set

Set consists of 1 of each:

- 6" Divider
- 6" Inside caliper
- 6" Outside caliper
- 6" Inch/metric pocket rule
- 5" Vernier caliper



Order No.	Regular Price	SALE
NE60TMS001	18.61	13.00

4393

## PROCHECK Combination Square Blades - 4R

- Hardened and tempered satin chrome ruler
- Graduated in 8ths, 16ths, 32nds and 64ths



Blade Size	Order No.	Regular Price	SALE
12"	PC23B124C	28.37	17.00
18"	PC23B184C	34.85	20.90
24"	PC23B244C	48.37	29.00

4507

## WORLD CLASS QUALITY 6 Pc. Hardness Testing Files

- Six specially shaped files, each with a nonslip grip, color-coded handle
- The Rockwell value is printed on each handle and the files range from HRc 40 through HRc 65
- Complete with storage case



Order No.	Regular Price	SALE
NR50FHC6	180.12	126.10

3884

## PROCHECK Refractometers

- Lightweight aluminum construction
- Ergonomic, comfortable & easy operation
- Anti-slip, rugged body with durable & hygienic grip
- Translucent viewing colored background
- Hard plastic portable carrying case with sampler included
- Comfortable eyepiece for easy viewing
- Available in 0-10 & 0-32 Brix scale
- Lifetime warranty against manufacturer defects
- Features auto temperature compensation (ATC) for shops with varying temperatures



Brix Scale	Order No.	Regular Price	SALE
0-10%	NZ6040000	120.77	72.50
0-32%	NZ6040005	149.52	89.70

8522

## Starrett® 93 Series T-Handle Tap Wrenches

- For holding taps, drills, reamers, and other small tools to be turned by hand
- Has a sliding handle which is frictionally held- this feature permits the handle to be removed entirely or positioned so that leverage can be applied when working in close quarters



Size	Right Hand Thread Length	Order No.	Regular Price	SALE
1/16" to 3/16"	2"	<b>MV7050427</b>	65.00	<b>58.50</b>
7/32" to 7/16"	2-1/2"	<b>MV7050428</b>	69.00	<b>62.10</b>
1/4" to 1/2"	3-1/2"	<b>MV7050429</b>	88.00	<b>79.20</b>

25071

## Starrett® Magnetic Base

### 660 Global Series

- Magnetic base indicator holder with triple-jointed arm
- Small, powerful magnetic base, with 70 lbs. holding force
- Three adjustable pivots controlled by a single knob for fast, easy indicator positioning

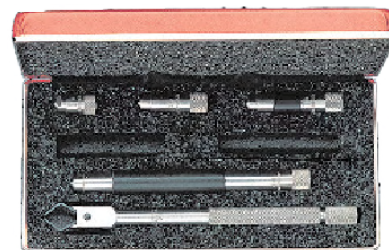


Order No.	Regular Price	SALE
<b>MV7068621</b>	229.00	<b>213.00</b>

5079

## Starrett® Tubular Inside Micrometers

- 3/8" Diameter rods
- Interchangeable anvils
- Hardened and ground anvils
- Handle
- Complete with carrying case
- .001" Graduation



## Starrett® Automatic Center Punch

### Model 18C

- Built-in mechanism strikes blow - no hammer needed
- Force regulated by turning knurled cap on end of punch
- Constant spring tension assures uniform depth and size of center marking
- 5-1/4"L x 11/16"D



Order No.	Regular Price	SALE
<b>MV7056757</b>	90.00	<b>83.70</b>

7785

Measuring Range	Accuracy	Graduation	Order No.	Regular Price	SALE
1-1/2"-8"	0.0001"	0.001"	<b>MV7053050</b>	569.00	<b>529.20</b>
1-1/2"-12"	0.0001"	0.001"	<b>MV7053052</b>	684.00	<b>636.10</b>
4"-24"	0.0001"	0.001"	<b>MV7053054</b>	885.00	<b>823.05</b>
4"-32"	0.0001"	0.001"	<b>MV7053055</b>	981.00	<b>912.30</b>
4"-40"	0.0001"	0.001"	<b>MV7053056</b>	1,064.00	<b>989.50</b>

4961



## Starrett® Thickness Gage or Feeler Stock

### In 12" and 304mm Lengths

- Convenient 12" lengths, 1/2" wide
- 32 Thicknesses meet all requirements
- Rounded ends - no ragged edges
- Made of finest tempered steel
- Each piece marked with thickness and in individual envelope
- With convenient 3/16" hole punched in end for hanging up
- Popular priced



Blade Length - 12"			
Thickness	Order No.	Regular Price	SALE
0.001"	MV7052837	9.70	9.00
0.0015"	MV7052838	6.40	5.95
0.002"	MV7052839	6.40	5.95
0.0025"	MV7052840	6.40	5.95
0.003"	MV7052841	6.40	5.95
0.004"	MV7052842	4.80	4.50
0.005"	MV7052843	4.90	4.60
0.006"	MV7052844	4.80	4.50
0.007"	MV7052845	4.80	4.50
0.008"	MV7052846	4.80	4.50
0.009"	MV7052847	4.30	4.00
0.010"	MV7052848	4.30	4.00
0.011"	MV7052849	4.30	4.00
0.012"	MV7052850	4.30	4.00
0.013"	MV7052851	4.30	4.00
0.014"	MV7052852	4.30	4.00
0.015"	MV7052853	4.30	4.00
0.016"	MV7052854	4.30	4.00
0.017"	MV7052855	4.30	4.00
0.018"	MV7052856	4.30	4.00
0.019"	MV7052857	4.30	4.00
0.020"	MV7052858	4.30	4.00
0.021"	MV7052859	4.30	4.00
0.022"	MV7052860	4.30	4.00
0.023"	MV7052861	4.30	4.00
0.024"	MV7052862	4.50	4.20
0.025"	MV7052863	4.40	4.10
0.026"	MV7052864	4.50	4.20
0.027"	MV7052865	4.50	4.20
0.028"	MV7052866	4.50	4.20
0.029"	MV7052867	4.50	4.20
0.030"	MV7052868	4.40	4.10

Blade Length - 304.0 mm			
Thickness	Order No.	Regular Price	SALE
0.03 mm	MV7052869	12.00	11.20
0.04 mm	MV7052870	9.00	8.40
0.05 mm	MV7052871	8.80	8.20
0.06 mm	MV7052872	9.00	8.40
0.08 mm	MV7052873	9.00	8.40
0.10 mm	MV7052874	7.40	6.90
0.15 mm	MV7052875	7.40	6.90
0.20 mm	MV7052876	5.20	4.80
0.25 mm	MV7052877	6.40	5.95
0.30 mm	MV7052878	6.60	6.10
0.35 mm	MV7052879	6.60	6.10
0.40 mm	MV7052880	6.60	6.10
0.45 mm	MV7052881	6.60	6.10
0.50 mm	MV7052882	6.60	6.10

Packed 12 pieces of a size in a box; Each piece in individual envelope.

1701

## 3M™ 500 Pairs One Touch Disposable Earplug Refill with 33 dB Earplugs

- **OUTSTANDING COMFORT:** E-A-Rsoft ear plugs have an advanced foam with a smooth texture - offering in-ear comfort for wearing over an extended time.
- **SOFT SOUND-ABSORBING FOAM:** Soft foam ear-plugs are easy to roll down and insert, then expand within the ear canal to help reduce noise exposure.
- **VERSATILE:** Use while chipping, chiseling, drilling, furnace operations, grinding, heavy equipment operations, machining, pouring/casting, power fastening, riveting, sanding, sawing and welding.
- **DESIGNED FOR 3M ONE TOUCH DISPENSER:** Dispenser delivers one uncorded foam ear plug with a gentle turn.



Color	Style	Order No.	Regular Price	SALE
Yellow	Disposable / Foam	<b>KB3591004</b>	0.20	<b>0.18</b>

500 earplugs - price per each plug

23128

## 3M™ 3M™ Skull Screws™ Earplugs P1310

- Polyurethane
- Tough look of threaded metal, but feel of soft foam
- Push-to-fit style prevents earplug roll down
- Foam tip stays clean
- NRR 32 dB
- 3M E-A-R Skull Screws Earplugs P1301 Corded is available to buy in increments of 120



Noise Reduction Rating	Style	Order No.	Regular Price	SALE
32 dB	Corded	<b>KB3592952</b>	1.39	<b>1.25</b>

Sold in Box Only - 120 minimum

22585

## BAYCO™ Multi-Purpose Rechargeable Work Light

- **Bulb:** LED
- **Run time:** 4-1/2 hrs High, 12-1/2 hrs Low
- **Lumens:** 600 High, 225 Low
- **Battery:** Rechargeable Lithium-ion
- **Features:** 3 integrated magnets for hands free use, detachable magnetic hook, IP-X4 water-resistant, AC/DC chargers included, 6 hour charge time
- 1 Year limited warranty



Order No.	Regular Price	SALE
<b>KE58SL2168B</b>	121.86	<b>84.50</b>

2479

## bolle SAFETY RUSH+ Goggles

- RUSH + has an ultra-sporty design with its highly flexible, co-injected and customizable temples!



Lens Color	Frame Color	Order No.	Regular Price	SALE
Clear	Black & Red	<b>BO1540252</b>	38.55	<b>29.50</b>
Twilight	Black & Grey	<b>BO1540258</b>	35.20	<b>26.95</b>
Smoke	Black & Grey	<b>BO1540259</b>	35.20	<b>26.95</b>
Light Brown	Black & Grey	<b>BO1540284</b>	36.58	<b>27.95</b>

2504

## Pyramex Safety Glasses

### Exceeds ANSI Z87.1-2003 High Impact Requirements

#### Avante

- Lightweight sport styling
- Built in rubber nose pad
- Vented frame
- 99% Effective against UV rays
- Black frame

#### V2 Reader

- Reader lens is out of user's direct line of sight
- 5 Different sizes of magnification available, clear lens
- 9.75 Base curved lens provides full side protection
- Black frame



Style - V2 Reader Magnifiers



Style - Avante



Style - Avante				
Lens Color	Magnification	Order No.	Regular Price	SALE
Amber	None	<b>KB54SB4530D</b>	9.27	<b>6.20</b>

Style - V2 Reader Magnifiers				
Lens Color	Magnification	Order No.	Regular Price	SALE
Clear	1.0x	<b>KB54SB1810R10</b>	17.67	<b>11.70</b>
Clear	1.5x	<b>KB54SB1810R15</b>	17.67	<b>11.70</b>
Clear	2.0x	<b>KB54SB1810R20</b>	17.67	<b>11.70</b>
Clear	2.5x	<b>KB54SB1810R25</b>	17.67	<b>11.70</b>
Clear	3.0x	<b>KB54SB1810R30</b>	17.67	<b>11.70</b>

24



## Disposable Earplugs

- Taper fit made of polyurethane material
- Plug gently expands and self adjusts to all size ear canals
- NRR: 31dB
- Priced per box



KB54DP1000 KB54DP1001

Style	Standard Pack	Order No.	Regular Price	SALE
Disposable / Uncorded	200	KB54DP1000	51.64	<b>36.00</b>
Disposable / Corded	100	KB54DP1001	51.64	<b>36.00</b>

\*All styles meet ANSI S3.19 Specifications

24522

## Safety Glasses

Exceeds ANSI Z87.1-2003 High Impact Requirements

### Bear Kat

- Non-slip temple sleeves
- Single wrap-around lens design with integral side shields



KB85DL110AF

### Dallas™

- Strong, lightweight polycarbonate lens Durmass
- Full length non-slip temple sleeves
- Bayonet temples reduce pressure on mastoid bone
- Unique nosebridge comfortably fit a wide variety of users
- Blocks 99.9% of ultraviolet radiation

DL1				
Lens Color	Frame Color	Order No.	Regular Price	SALE
Clear	Black	KB85DL110AF	10.47	<b>7.30</b>
Gray	Black	KB85DL112AF	11.32	<b>7.90</b>
Gray	Nuclear Orange	KB85DL121AF	10.36	<b>7.30</b>

23022

## Safety Glasses Plus Readers

### Klondike with Magnifier®

- Bi-focal magnifier lenses
- 5-Position ratchet spatula temples
- Filters 99.9% of UV radiation
- Strong, lightweight polycarbonate polarized lens with 11° base curve
- Meets or exceeds ANSI Z87.1 safety standards



Lens Color	Frame Color	Magnification	Order No.	Regular Price	SALE
Clear	Black	1.0x	KB85K3H10	16.40	<b>11.50</b>
Clear	Black	1.5x	KB85K3H15	16.40	<b>11.50</b>
Clear	Black	2.0x	KB85K3H20	16.40	<b>11.50</b>
Clear	Black	2.5x	KB85K3H25	16.40	<b>11.50</b>

23772

## LAW® Safety Glasses

- Non-slip gel temple pads
- Universal nose bridge comfortably fits large user audience
- Contemporary, wrap-around lens design



Lens Color	Frame Color	Order No.	Regular Price	SALE
Clear	Clear	KB85LW110	4.66	<b>3.30</b>
Gray	Gray	KB85LW112	4.66	<b>3.30</b>

2538

## Faceshields & Headgear

- Headgear has locking cams
- Shield provides excellent protection from particle debris and sparks
- Clear polycarbonate
- Face shield and headgear sold separate



Headgear							
Shield Width	Shield Height	Shield Thickness	Shield Material	Width	Order No.	Regular Price	SALE
-	-	-	-	6 1/2"   7 3/4"	KB85103	17.22	<b>12.10</b>

Face Shield							
Shield Width	Shield Height	Shield Thickness	Shield Material	Width	Order No.	Regular Price	SALE
15 1/2"	8"	0.040"	Polycarbonate	-	KB85181640	5.59	<b>3.90</b>
15 1/2"	10"	0.040"	Polycarbonate	-	KB85101640	5.87	<b>4.10</b>

2535

## DAZOR Ecoflex II LED Spot Lights

- 7 LEDs with optical lensing to produce intense white light where you need it
- Dust-proof and water protected fully enclosed head with glass lens cover
- 7' Cord with 24V AC/DC inline switching power supply
- Multiple mounting options for machine work environment
- UL listed



Floating

Flexible

OAL (in.)	Arm Style	Mount	Order No.	Regular Price	SALE
24	Floating	Clamp	KC50LCA27CMBK	622.47	<b>529.10</b>
34	Floating	Clamp	KC50LCA37CMBK	622.47	<b>529.10</b>
25	Flexible	Clamp	KC50LFA35CMBK	369.89	<b>314.40</b>
17	Flexible	Desk	KC50LFA35DBBK	372.65	<b>316.80</b>
17	Flexible	L-Bracket	KC50LFA35LBBK	390.60	<b>332.00</b>
17	Flexible	Magnetic	KC50LFA35MMBK	390.60	<b>332.00</b>

2548

## Chill-Its® 6710CT Evaporative Cooling Triangle Hat & 6700CT Bandana

- Advanced PVA material activates easily and quickly when run under water for one minute
- Re-usable: just soak in water to reactivate
- Super-evaporative cooling process helps keep you cool
- Lightweight and low profile: perfect for under hard hats
- Tie closure
- Patented design



Cooling Triangle Hat



Bandana

Bandana				Cooling Triangle Hat			
Color	Order No.	Regular Price	SALE	Order No.	Regular Price	SALE	
Solid Blue	LF656700CTB	8.32	<b>5.95</b>	LF656710CTB	16.46	<b>11.95</b>	
Camo	LF656700CTC	8.32	<b>5.95</b>	LF656710CTC	16.46	<b>11.95</b>	
Flames	LF656700CTF	8.32	<b>5.95</b>	LF656710CTF	16.46	<b>11.95</b>	
Stars & Stripes	LF656700CTSS	8.32	<b>5.95</b>	LF656710CTSS	16.46	<b>11.95</b>	

2597

## Honeywell Welding Helmets

### HW100:

- Easy ratchet adjustment system for personalized fit
- Replaceable, padded sweatband
- Operating temperature range: +23°F to +131°F



### HW200:

- Grind mode functionality that ensures the ADF will not darken when used during clean-up work
- Sensitivity adjustment that gives the wearer the option to adjust the filter's sensitivity
- Replaceable, padded sweatband
- Operating temperature range: +14°F to +131°F

View Width	View Height	Lens Shade	Window Style	Color	Order No.	Regular Price	SALE
3.8"	1.7"	10	Fixed Front	Black	LF50HW100	297.27	<b>239.40</b>
3.8"	1.9"	9-13	Fixed Front	Black	LF50HW200	394.30	<b>322.10</b>

2701

## Honeywell Disposable Corded Earplugs

- Contoured shaped is easier to insert, resists tendency to back out of ear canal
- Polyurethane foam enhances comfort, especially for long term wearer
- Ideal for people with smaller ear canal
- Sold 100 per box
- Price per each



Noise Reduction Rating	Style	Order No.	Regular Price	SALE
33 dB	Corded	LF50MAX30	0.70	<b>0.50</b>

Compliance: ANSI S3.19-1974

25

## Legacy Heavy Duty Barrel Pump

- Two-piece telescoping suction tube fits 30 to 55 gallon drums
- Pump delivers a full ten ounces of fluid per stroke
- Rugged epoxy finish pump assembly
- Discharge spout thread fits all garden hose fittings
- Complete with a standard bung adapter, tough all steel foot valve and piston valve
- For oil based material only
- Weight: 7 lbs.



Type	Weight	Order No.	Regular Price	SALE
Heavy Duty Barrel Pump	7 lbs	LBX55L3000	79.89	<b>56.40</b>

5436

## LINCOLN ELECTRIC Black Cloth Welding Shirts

- Treated fabrics are cotton or cotton-blend fabrics that are treated with chemicals that form a permanent bond with the fabric that cannot be washed out when the recommended laundering instructions are followed
- Sleeve length varies by size from 31 in. to 34 in.
- Machine washable
- Features snap sleeves for form fitting cuffs



		Khaki			Black		
Size	Material	Order No.	Regular Price	SALE	Order No.	Regular Price	SALE
Medium	Cotton	LE01KH841M	75.51	<b>66.30</b>	LE01KH809M	75.51	<b>66.30</b>
Large	Cotton	LE01KH841L	75.51	<b>66.30</b>	LE01KH809L	75.51	<b>66.30</b>
X-Large	Cotton	LE01KH841XL	75.51	<b>66.30</b>	LE01KH809XL	75.51	<b>66.30</b>
2X-Large	Cotton	LE01KH841XXL	85.00	<b>74.70</b>	LE01KH809XXL	82.65	<b>72.60</b>

Pricing could change from the mfg please call for current pricing

28737

## LINCOLN ELECTRIC Fire Resistant Black Welding Sleeves

- Slip on a pair of welding sleeves for added spatter and heat resistance.
- These black sleeves feature 9 oz. 100% flame retardant material where possible to keep you cool, but include split leather panels in high wear areas.
- Elastic cuffs at each end keep spatter out and hold the sleeves in position.
- Sleeve length 21" (53 cm)



Color	Material	Order No.	Regular Price	SALE
Black	Cotton	LE01KH813	18.20	<b>16.30</b>

29101

## PRM PRO Air Cooled torches 150 & 125

- 17 and 9 Series Torches Air cooled torches
- Silicone Rubber
- 3 Styles to choose from
- Hose not included



150 Amp Air-cooled			
Type	Order No.	Regular Price	SALE
Flex Torch Body	WE1017F	61.13	52.90
Flex Torch Body	WE1017FV	64.23	55.60
Flex Torch Body	WE1017FVMT	151.51	135.90
Torch	WE1017V	51.95	47.30

125 Amp Air-cooled			
Type	Order No.	Regular Price	SALE
Flex Torch Body	WE109F	61.13	52.90
Flex Torch Body	WE109FV	103.85	89.90

2906

## Endura® MIG Welding gloves with 360° Cut & Heat protection

- Heat protection up to 200°C / 392°F
- Blended aramid liner provides 360° ANSI Level A4 cut protection
- High tensile strength goatskin provides outstanding abrasion resistance
- Cut-and-sewn construction for an optimal, comfortable fit
- Wing thumb design for durability and comfort
- Arc Flash testing placed these gloves at level 3, with an Arc Thermal Performance Value (ATPV) of 36 cal/cm<sup>2</sup>



Size	Cut Rating	Abrasion Rating	Arc Rated	Puncture Rating	ManufacturerNo	Order No.	Regular Price	SALE
Small	-	-	-	-	0260S	RT580260S	64.32	51.50
Medium	-	-	-	-	0260M	RT580260M	64.32	51.50
Large	-	-	-	-	0260L	RT580260L	64.32	51.50
X-Large	-	-	-	-	0260X	RT580260X	64.32	51.50
2X-Large	-	-	-	-	02602X	RT5802602X	64.32	51.50
3X-Large	ANSI A4	ANSI Level 4	ANSI CAT 3	ANSI Level 3	399GK-GL5XXX	SG0253840	43.48	33.00

30826

## Superior Glove Dexterity® Fine-gauge nylon gloves for use with adhesive material

- PVC palms resist glue, caulking materials, and other adhesives.
- PVC coating is foamed for increased wet/oily grip
- ANSI Level 3 abrasion resistant and ANSI Level 2 puncture resistant
- Barehanded feel for ultimate dexterity
- Silicone-free and optimized for the automotive industry
- Fine-gauge nylon provides touch sensitivity
- Easy to launder



Size	Material	ManufacturerNo	Order No.	Regular Price	SALE
Small	Nylon	S13BPVC-7	SG0262040	5.98	4.50
Medium	Nylon	S13BPVC-8	SG0262050	5.98	4.50
Large	Nylon	S13BPVC-9	SG0262060	5.98	4.50
X-Large	Nylon	S13BPVC-10	SG0262070	5.98	4.50

30803

## 7018 Mild Steel Electrodes

- High deposition electrode for low and medium carbon steels
- It is an efficient iron powder, low hydrogen electrode with excellent mechanical properties, crack resistance, and X-ray quality welds
- This electrode offers a quiet, stable low penetration spatter-free arc
- Sold by the pound



Diameter	Length	Container Type	ManufacturerNo	Order No.	Regular Price	SALE
3/32"	14"	5 Lb Package	7018505	HR7120240	6.62	5.95
1/8"	14"	5 Lb Package	7018605	HR7120250	6.35	5.70
5/32"	12"	5 Lb Package	7018705	HR7120260	6.35	5.70
3/32"	12"	10 Lb Package	70185010	HR7120270	6.35	5.70

2656

## Cool Grip® 360°cut protection w/heat resistance and added forearm protection

- DuPont™ Kevlar® and carbon fiber blend is impervious to heat and flames
- 360° ANSI Level A5 cut protection and ANSI Level 5 heat resistance.
- Heat protection up to 320°C / 608°F
- Glove-within-a-glove design with a 100% wool knit terry liner traps air in for excellent protection against thermal contact
- Heat protection features do not compromise dexterity and comfort
- 4" gauntlet cuffs for extra forearm protection
- To limit the risk of allergic reactions, these gloves are crafted with latex-free materials



Size	Cut Rating	ManufacturerNo	Order No.	Regular Price	SALE
Small	ANSI A5	SKX-W4/S	SG0269520	83.33	60.10
Medium	ANSI A5	SKX-W4/M	SG0269530	83.33	60.10
Large	ANSI A5	SKX-W4/L	SG0269540	83.33	60.10
X-Large	ANSI A5	SKX-W4/XL	SG0269550	83.33	60.10

30813

## Alloy 5356 (MIG)

- Very good all purpose wire
- Most widely used of all aluminum fillers metals
- Sold by the pound per spool



Wire Size	Container Size	ManufacturerNo	Order No.	Regular Price	SALE
0.0300"	1 lbs.	05356E1	HR7120430	26.09	21.95
0.0350"	16 lbs.	05356F6	HR7120450	16.70	13.95
3/64"	1 lbs.	535621	HR7120460	17.94	14.95
3/64"	16 lbs.	535627	HR7120470	15.60	12.95

Price Per Pound

2659

## PRM PRO Heavy Duty Stool with Back Rest

### Rest

- Red frame / black seat
- Thick big vinyl cushioned 14" seat
- Stool capacity 300 lbs.
- Multiple adjustable backrest
- Powder coated paint
- Ships UPS



Height	Order No.	Regular Price	SALE
31"	<b>RZ451000</b>	203.68	<b>171.40</b>

29385

## PRM PRO Heavy Duty Adjustable Stool

- Black frame / red seat
- Cushioned 14" seat red seat with square foot rest
- Stool capacity 300 lbs.
- Air-cylinder adjustable seat, 5" estimate of height differential
- Round foot rest
- Powder coated paint
- Ships UPS



Adjustable Height	Order No.	Regular Price	SALE
26"-31"	<b>RZ451005</b>	172.86	<b>135.80</b>

29386

## PRM PRO Swivel Tractor Seat

- Air cylinder for easy height adjustment
- Five 3-1/2" heavy duty, chrome finished casters with rubber tread for ease of mobility
- Large, reinforced 17" diameter 1" deep tool tray
- Seat width 16"
- Limited lifetime warranty
- Ships Purolator



Height	Order No.	Regular Price	SALE
18"-22"	<b>RZ454000</b>	235.84	<b>191.60</b>

5484

## PRM PRO Mechanics Seat

- Perfect for shop or garage with removable seat cushion that doubles as a kneeling pad
- Made from polyethylene, which will not scratch, dent, rust or stain
- 24" W x 18" D x 20" H
- Bottom tub shelf measures 2-3/4" deep
- Rolling cart with four 4" easy-roll casters, two with locking brake
- Assembly required
- Weight capacity 400 lbs
- Limited lifetime warranty against manufacturer defects
- Ships UPS at dimensional rate



Order No.	Regular Price	SALE
<b>SA7050000</b>	312.34	<b>230.50</b>

24310

## KLEIN TOOLS Canvas Tool Buckets

### 5109SLR

- Load rated: 150-pounds (68 kg)
- Web strap extends down the side of the bucket
- Heavy duty plastic bottom with drain holes

### 5104S

- Load rated for 100-pounds (45.4 kg)
- Web handle extends down the sides of the bucket for added strength
- Made of heavy-duty No. 4 canvas
- High-density polyethylene top ring for strength and chemical resistance
- Leather reinforced bottom
- Inside pocket measures 8-Inch x 8-Inch (203 x 203 mm)

### 5104FR

- Made of flame-resistant No. 4 canvas
- Load rated for 100-pounds (45 kg)
- Durable leather-reinforced handle extends down the sides of the bucket for added strength
- Stitched and riveted with a double-reinforced bottom for durability
- Meets the performance requirement of NFPA -701

### 5104CLRFR

- Made of flame-resistant No. 4 canvas
- Extended canvas top zips closed for overhead lifting
- Load rated for 100-pounds (45 kg)
- Stitched and riveted with a double-reinforced bottom for durability
- Drop-forged steel locking carabiner for added safety
- Meets the performance requirement of NFPA -701

### 5104CLR22

- Load rated 150-pounds (68 kg)
- Top of bucket zips closed
- 14-inch (356 mm) diameter accommodates standard 5-gallon (18.93 L) bucket
- Body constructed of heavy-duty No. 1 canvas
- Web strap extends down the side of the bucket
- Leather reinforced bottom extends 3-Inch (76 mm) up the side
- Durable steel rim



KP6012865



KP6012855



KP6012840

Width	Length	Height	Color	ManufacturerNo	Order No.	Regular Price	SALE
12"	15"	15"	Natural	5109SLR	<b>KP6012865</b>	128.93	<b>94.00</b>
12"	17"	17"	Natural	5104S	<b>KP6012855</b>	195.74	<b>142.00</b>
12"	17"	17"	Black	5104FR	<b>KP6012850</b>	227.60	<b>165.00</b>
12"	17"	17"	Black	5104CLRFR	<b>KP6012845</b>	318.35	<b>231.00</b>
14"	22"	22"	Off-White	5104CLR22	<b>KP6012840</b>	292.80	<b>213.00</b>

28934



## KLEIN TOOLS Tradesman Pro™ Backpack

- 39 different-sized pockets for tools, parts and gear
- Reflective shoulder straps with extra padding and handle
- Tall interior pockets for long screwdrivers
- Upper pockets holds safety glasses, cell phones, etc
- Zipper pocket for small parts and tools
- Exterior tape thong and tape measure holder
- Fully-molded bottom protects from the elements



Number of Pockets	Width	Length	Height	Color	ManufacturerNo	Order No.	Regular Price	SALE
39	7"	14 1/2"	20"	Black, Reflective Gray, Green Accents	55597	KP6012785	274.60	242.50
39	7"	14 1/2"	20"	Camo	55421BP-14CAMO	KP6012910	246.10	221.50

28930

## KLEIN TOOLS Oval Bucket with 41 Pockets

- 26 pockets inside and 15 pockets outside
- No. 6 canvas
- Sisal-rope handle
- Tripod suspension rope for greater stability
- Equipped with Cat. No. 2012 swivel snap hook
- Black molded polypropylene bottom



ManufacturerNo	Number of Pockets	Width	Length	Height	Color	Order No.	Regular Price	SALE
5152S	41	7"	14"	10"	Natural	KP6012885	223.67	206.20

28936

## KLEIN TOOLS Tradesman™ Pro Rolling Tool Bag

- Rugged 6-Inch wheels easily handle rough terrain
- 24 pockets for maximum tool storage
- Orange interior for easy tool visibility
- Molded kick plate to protect from the elements
- Wide open interior easily accommodates large tools
- Load tested up to 200-pound (90.7 kg)
- Heavy-duty telescoping handle
- Water resistant



Number of Pockets	Width	Length	Height	Material	Color	ManufacturerNo	Order No.	Regular Price	SALE
24	12-1/2"	19"	14"	600D Ballistic Weave	Black/Orange	55452RTB	KP6012920	447.42	326.80

28843

## KLEIN TOOLS Tradesman Pro™ Tech Bag

- Separate compartment keeps laptop protected from other tools
- Storage for adapters and cables
- Zipper pocket for files and paperwork
- Organizer pocket for pens, phone, cables, and more
- 22 pockets for tons of tool storage
- Orange interior to find tools faster
- Protective guards and water resistant material on bottom protects from the elements



Number of Pockets	Width	Length	Height	Color	ManufacturerNo	Order No.	Regular Price	SALE
22	6-1/2"	19"	16"	Black/Orange	55455M	KP6012925	156.00	163.40

28942





### 3-Jaw Semi Steel Plain Back Chucks

**Features:**

- 1 Set of hard master jaws
- 1 Set of hard top reversible jaws
- 1 Chuck wrench
- 1 Set of mounting bolts
- 2 Hex keys
- Eye bolts for chuck sizes 16" diameter and larger
- Scroll and jaws hardened and precision ground
- Accuracy varies with size: 0.0006-0.003



Chuck Size	Operation Type	Order No.	Regular Price	SALE
5"	1.260"	HK308000500	1,062.75	<b>903.30</b>
6"	1.653"	HK308000600	1,130.38	<b>960.80</b>
8"	2.170"	HK308000800	1,378.82	<b>1,172.00</b>

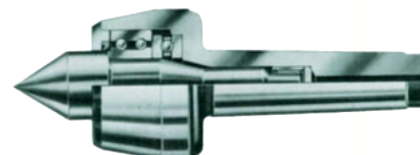
"larger sizes available" contact your distributor for promotional pricing and freight

1529



### Live Centers

- Made of hardened steel and ground for high accuracy
- Precision high quality bearings



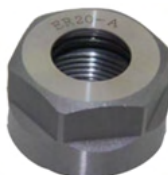
Mount	Accuracy	Point Length	Head Diameter	Overall Length	Head Length	Maximum RPM	Radial Load	Order No.	Regular Price	SALE
1 MT	0.0002"	0.670"	1.500"	4.07"	1.950"	5,000	220 lbs	HK3088111	237.39	<b>201.80</b>
2 MT	0.0001"	0.850"	1.570"	4.74"	2.220"	5,000	460 lbs	HK3088112	193.23	<b>164.20</b>
3 MT	0.0001"	1.080"	2.200"	6.14"	2.950"	4,000	925 lbs	HK3088113	306.40	<b>260.40</b>
4 MT	0.0001"	1.320"	2.520"	7.24"	3.350"	3,000	1,850 lbs	HK3088114	321.59	<b>273.40</b>
5 MT	0.0002"	1.730"	3.350"	9.33"	4.250"	2,500	4,400 lbs	HK3088115	585.20	<b>497.40</b>
6 MT	0.0002"	2.520"	5.120"	13.13"	5.960"	2,000	7,700 lbs	HK3088116	1,053.09	<b>895.10</b>

942

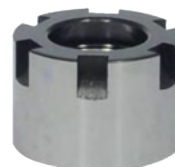


### ER Holder Clamping Nuts

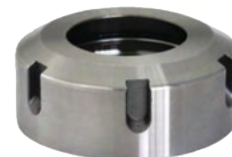
- List No. 1025



A Nut



Mini Nut



UM Nut

Collet Size	Style	Connection Thread Nominal Size Machine Side (THSZMS)	Diameter Lock Nut (DLN)	Lock Nut Height (HLN)	Order No.	Regular Price	SALE
ER11	A Nut	M14 x 0.75	19 mm	11.3 mm	MX1326623	16.01	<b>15.20</b>
ER16	A Nut	M22 x 1.5	28 mm	17.5 mm	MX1326624	16.01	<b>15.20</b>
ER20	A Nut	M25 x 1.5	34 mm	19 mm	MX1326625	17.39	<b>16.50</b>
ER8	Mini Nut	M10 x 0.75	12 mm	10 mm	MX1326626	26.65	<b>25.30</b>
ER11	Mini Nut	M13 x 0.75	16 mm	12 mm	MX1326627	16.01	<b>15.20</b>
ER20	Mini Nut	M24 x 1	28 mm	19 mm	MX1326629	17.39	<b>16.50</b>
ER32	UM Nut	M40 x 1.5	50 mm	22.5 mm	MX1326621	21.37	<b>20.30</b>
ER25	UM Nut	M32 x 1.5	42 mm	20 mm	MX1326620	18.64	<b>17.70</b>
ER40	UM Nut	M50 x 1.5	63 mm	25.5 mm	MX1326622	24.01	<b>22.80</b>

30119

## RAPIDHOLD End Mill Holders with R8 Shank



- Made of Alloy Forged Steel for a long durable service life
- Hardened to RC 56-60 and ground to ensure maximum accuracy
- Draw bar thread 7/16"-20

Connection Diameter Workpiece Side (DCONWS)	Rapidhold		
	Order No.	Regular Price	SALE
3/16"	GN50R8E316	40.16	24.10
3/8"	GN50R8E38	41.41	24.80
1/2"	GN50R8E12	41.41	24.80
5/8"	GN50R8E58	47.06	28.20
3/4"	GN50R8E34	47.06	28.20
7/8"	GN50R8E78	49.00	29.40
1"	GN50R8E1	49.00	29.40
1-1/4"	GN50R8E114	63.90	38.30
1-1/2"	GN50R8E112	72.87	43.70

†Single End Endmills Only.

1120

## RAPIDHOLD Straight Shank ER Collet Holders



- Produced according to AT3 specifications
- Tools are made of a high quality alloy steel
- Collet seat taper T.I.R. greater than 0.0002"
- Through the spindle coolant capability
- Dynamically balanced to G6.5 @ 15,000 RPM
- All collet chucks are supplied with depth set screws
- All balanced tools are supplied with QA certificate

Shank Size (SS) - 1"					
Connection Size (CSI)	Body Diameter (BD)	Body Length (LB)	Order No.	Regular Price	SALE
ER20	1.38"	1.42"	RH2226203R	104.96	63.00
ER25	1.66"	1.57"	RH2226204R	104.95	63.00
ER32	1.97"	2.03"	RH2226207R	104.96	63.00
ER40	2.49"	2.56"	RH2226208R	88.82	53.30
ER40	2.49"	2.56"	RH2226209R	104.95	63.00

Shank Size (SS) - 1/2"					
Connection Size (CSI)	Body Diameter (BD)	Body Length (LB)	Order No.	Regular Price	SALE
ER11	0.63"	1.27"	RH2226201R	80.76	48.50

Shank Size (SS) - 1-1/4"					
Connection Size (CSI)	Body Diameter (BD)	Body Length (LB)	Order No.	Regular Price	SALE
ER32	1.97"	2.03"	RH2226210R	88.82	53.30
ER32	1.97"	2.03"	RH2226211R	104.96	63.00
ER40	2.49"	2.56"	RH2226212R	88.82	53.30
ER40	2.49"	2.56"	RH2226213R	104.96	63.00

Shank Size (SS) - 3/4"					
Connection Size (CSI)	Body Diameter (BD)	Body Length (LB)	Order No.	Regular Price	SALE
ER16	0.87"	1.24"	RH2226202R	88.82	53.30
ER32	1.97"	2.03"	RH2226206R	88.82	53.30

22223

## RAPIDHOLD Tap Adapters



- Rigid - for through holes
- Tension/compression - provides protection against tap breakage and is the best solution for blind hole tapping

Adapter Size - 1							
Tap Range (Fractional)	Tap Range (Metric)	Rigid/Positive Tap Adapter			Torque Control Tap Adapter		
		Order No.	Regular Price	SALE	Order No.	Regular Price	SALE
#0 - 6"	-	TS1329501	56.59	39.60	TS1329527	142.16	99.50
#8	M4	TS1329502	56.59	39.60	TS1329528	142.16	99.50
#10	M5	TS1329503	56.59	39.60	TS1329529	142.16	99.50
#12	-	TS1329504	56.59	39.60	TS1329530	142.16	99.50
1/4"	M6	TS1329506	56.59	39.60	TS1329532	142.16	99.50
5/16"	M8	TS1329507	56.59	39.60	TS1329533	142.16	99.50
3/8"	M10	TS1329508	56.59	39.60	TS1329534	142.16	99.50
7/16"	M11	TS1329509	56.59	39.60	TS1329535	142.16	99.50
1/2"	M12	TS1329510	56.59	39.60	TS1329536	142.16	99.50
9/16"	M14	TS1329511	56.59	39.60	TS1329537	142.16	99.50
1/8" NPT	-	TS1329505	56.59	39.60	TS1329531	142.16	99.50

Adapter Size - 2							
Tap Range (Fractional)	Tap Range (Metric)	Torque Control Tap Adapter			Rigid/Positive Tap Adapter		
		Order No.	Regular Price	SALE	Order No.	Regular Price	SALE
5/16"	M8	TS1329539	182.19	127.50	TS1329569	73.15	51.20
3/8"	M10	TS1329540	182.19	127.50	TS1329570	73.15	51.20
7/16"	M11	TS1329542	182.19	127.50	TS1329571	73.15	51.20
1/2"	M12	TS1329543	182.19	127.50	TS1329572	73.15	51.20
9/16"	M14	TS1329545	182.19	127.50	TS1329573	73.15	51.20
5/8"	M16	TS1329546	182.19	127.50	TS1329514	73.15	51.20
11/16"	M18	TS1329547	182.19	127.50	TS1329515	73.15	51.20
3/4	-	TS1329548	182.19	127.50	TS1329516	73.15	51.20
13/16"	M20	TS1329549	182.19	127.50	TS1329517	73.15	51.20
7/8"	M22	TS1329550	182.19	127.50	TS1329518	73.15	51.20
1/4" NPT	-	TS1329538	182.19	127.50	TS1329574	73.15	51.20
3/8" NPT	-	TS1329541	182.19	127.50	TS1329512	73.15	51.20
1/2" NPT	-	TS1329544	182.19	127.50	TS1329513	73.15	51.20

Adapter Size - 3							
Tap Range (Fractional)	Tap Range (Metric)	Rigid/Positive Tap Adapter			Torque Control Tap Adapter		
		Order No.	Regular Price	SALE	Order No.	Regular Price	SALE
1/2" - 3/4"	M12, M12.5	TS1329575	195.99	137.20	TS1329565	345.05	258.80
9/16"	M14	TS1329576	195.99	137.20	TS1329551	419.58	293.70
5/8"	M16	TS1329577	195.99	137.20	TS1329552	419.58	293.70
11/16"	M18	TS1329578	195.99	137.20	TS1329553	419.58	293.70
3/4"	-	TS1329579	195.99	137.20	TS1329554	419.58	293.70
13/16"	M20	TS1329580	195.99	137.20	TS1329566	345.05	258.80
7/8"	M22	TS1329520	232.91	163.00	TS1329556	419.58	293.70
15/16"	M24	TS1329521	195.99	137.20	TS1329557	419.58	293.70
#1	M25	TS1329522	195.99	137.20	TS1329558	419.58	293.70
1 1/16" - 1 1/8"	M27	TS1329524	195.99	137.20	TS1329560	419.58	293.70
1 3/16" - 1 1/4"	M30	TS1329525	195.99	137.20	TS1329561	419.58	293.70
1 5/16" - 1 3/8"	M33	TS1329526	195.99	137.20	TS1329562	419.58	293.70
3/8" NPT	-	TS1329563	195.99	137.20	TS1329567	345.05	258.80
1/2" NPT	-	TS1329564	195.99	137.20	TS1329568	345.05	258.80
3/4" NPT	-	TS1329519	195.99	137.20	TS1329555	419.58	293.70
1" NPT	-	TS1329523	195.99	137.20	TS1329559	419.58	293.70

Adapter Size - 4				
Rigid/Positive Tap Adapter				
Tap Range (Fractional)	Tap Range (Metric)	Order No.	Regular Price	SALE
1 1/2", 1 7/16"	M36	TS1329581	291.22	203.90
15/8"	M39	TS1329582	291.22	203.90
13/4"	M42	TS1329583	291.22	203.90
17/8"	-	TS1329584	291.22	203.90

1570

**FALMGREN**  
INC **5-Axis Milling Stop**

- Locking lever can be positioned at 360°
- 5/8" T-nut
- 1/4" Diameter stop rod
- Aluminum and steel construction



Model No	Height Capacity	Order No.	Regular Price	SALE
80211	6"	JB559680211	238.49	<b>214.60</b>

1420

**Safety Shield Chip Hook-R**

- New safety orange shielded chip puller
- 5" Diameter shield
- 1" Diameter handle, 4-1/2" long
- 1/4" USA steel rod, 1-1/2" hook with 60° point standard

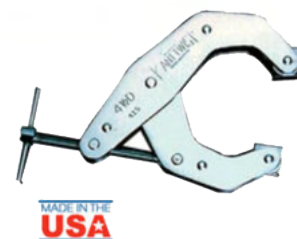


Hook Length	Order No.	Regular Price	SALE
18"	HF70SCH18	27.22	<b>25.30</b>
24"	HF70SCH24	32.12	<b>29.90</b>
30"	HF70SCH30	34.29	<b>31.90</b>

1157

## KANTWIST Deep Throat Jaw Opening Clamps

- Allows for a deeper grab on the clamped object
- Multi-purpose clamps combine the best features of rodinary "C" and parallel clamps
- Free-floating jaws adjust to un-parallel surfaces
- Plates are made of high tensile steel
- Eliminates distorting and twisting action of conventional clamps
- Copper plated jaws and screws are ideal for welding
- All clamps close completely

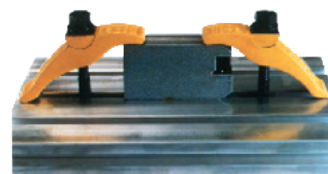


Maximum Opening Capacity	Open Throat Depth	Closed Throat Depth	Load Capacity	Order No.	Regular Price	SALE
2 1/2"	2"	1 13/16"	700 lbs	SE64407	44.90	34.90
4 1/2"	2 1/4"	3 13/16"	1700 lbs	SE64415	74.88	58.20
6"	4 1/2"	5 1/2"	2000 lbs	SE64421	109.43	87.50
10"	6"	7"	3500 lbs	SE64435	295.94	236.80

1279

## Rite Hite Self Positioning Hold Down Clamps

- Use on any machine with a T slot
- Instant adjustment up to 5"
- Assorted stud sizes 3/8" to 1"
- Swivel rocker attached to base

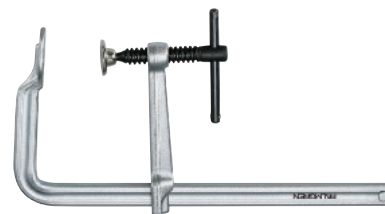


Thread Size	Length	Width	Thickness	Maximum Height	Clamp Force	Holding Capacity	Weight	Order No.	Regular Price	SALE
1"	11 1/8"	2 7/8"	3 5/16"	5"	-	65,000 lbs	12.00 lbs	SG751000L	171.76	148.70
1"	9"	2 7/8"	3 5/16"	3"	-	8,000 lbs	10.00 lbs	SG751001S	166.31	143.90
3/8"	3 1/2"	1 1/8"	1 3/32"	1 1/4"	-	10,000 lbs	0.50 lbs	SG75375L	40.83	35.30
3/8"	3"	1 1/8"	1 3/32"	1"	-	14,000 lbs	0.50 lbs	SG75376S	38.11	33.00
1/2"	5 3/4"	1 7/16"	1 13/32"	2 1/2"	-	12,800 lbs	1.40 lbs	SG75500L	54.45	47.10
1/2"	4 1/4"	1 3/8"	1 13/32"	1 3/4"	-	16,800 lbs	1.00 lbs	SG75501S	51.72	44.78
5/8"	6 3/4"	1 7/8"	1 1/2"	3 1/2"	-	18,000 lbs	2.50 lbs	SG75625L	68.05	58.90
5/8"	5 1/2"	1 7/8"	1 1/2"	2 3/4"	-	24,000 lbs	2.00 lbs	SG75626S	65.35	56.60
3/4"	9"	2 1/8"	2 3/8"	5"	-	24,000 lbs	4.75 lbs	SG75750L	95.41	82.50
3/4"	7"	2.00"	2 3/8"	3 1/2"	-	35,000 lbs	4.00 lbs	SG75751S	92.69	80.20

22786

## FALMGREN INC L-Clamps

- Just slide the clamping arm to the work piece and tighten
- When the job is complete, simply loosen the spindle and slide the clamping arm back
- L-Clamps handle a wide variety of work sizes and shapes allowing you to clamp the work piece quicker while using fewer clamps on each job
- Lifetime Warranty



Total Capacity	Throat Depth	Spindle Diameter	Clamping Pressure	Order No.	Regular Price	SALE
4	2 3/8"	1/2"	600 lbs	JB509629304	41.41	37.30
6	3 5/32"	9/16"	700 lbs	JB509629306	48.31	43.50
8	3 15/16"	5/8"	1,000 lbs	JB509629308	70.39	63.40
10	3 15/16"	5/8"	1,200 lbs	JB509629310	78.67	70.80
12	3 15/16"	3/4"	1,200 lbs	JB509629312	103.52	93.20
16	3 15/16"	3/4"	1,650 lbs	JB509629316	117.32	105.60

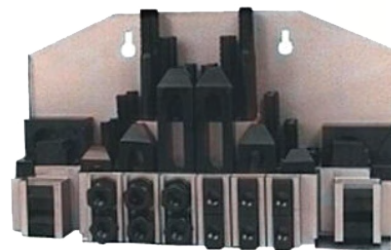
1437

**RAPIDHOLD**  **52 Pc. Clamping Set**

**For Bridgeport Type Machines For 5/8 Table Slot with 1/2-13 T-Nuts Studs**

**Set Contains:**

- 4 Coupling nuts
- 6 Flange nuts
- 6 T-slot nuts
- 24 Studs, 4 each: 3, 4, 5, 6, 7 & 8" long
- 6 Step blocks
- 6 Serrated end clamps
- 1 All plastic holder



Order No.	Regular Price	SALE
<b>SG6012625CK</b>	119.25	<b>77.50</b>

1405

**TECO** **Serrated End Clamps**

- Ideal for gripping the sides of a workpiece
- Case hardened
- Black oxide finish
- Teeth match all Step Blocks



Thread Size	Overall Length	Overall Width	Clamp Height	Slot Length	Order No.	Regular Price	SALE
5/16" & 3/8"	2-1/2"	1"	1/2"	13/16"	<b>SG5030501</b>	20.64	<b>14.40</b>
5/16" & 3/8"	4"	1"	5/8"	1-7/16"	<b>SG5030502</b>	28.57	<b>20.00</b>
5/16" & 3/8"	6"	1-1/8"	3/4"	2-3/16"	<b>SG5030503</b>	35.82	<b>25.10</b>
1/2"	2-1/2"	1-1/8"	1/2"	11/16"	<b>SG5030504</b>	24.01	<b>16.80</b>
1/2"	4"	1-1/4"	3/4"	1-5/16"	<b>SG5030505</b>	35.05	<b>24.50</b>
1/2"	6"	1-1/4"	7/8"	2-1/16"	<b>SG5030506</b>	42.14	<b>29.50</b>
5/8"	2-1/2"	1-1/4"	5/8"	9/16"	<b>SG5030507</b>	30.87	<b>21.60</b>
5/8"	4"	1-1/2"	3/4"	1-3/16"	<b>SG5030508</b>	42.46	<b>29.70</b>
5/8"	6"	1-1/2"	7/8"	1-15/16"	<b>SG5030509</b>	51.20	<b>35.80</b>
3/4"	4"	1-1/2"	3/4"	1-1/16"	<b>SG5030510</b>	45.35	<b>31.70</b>
3/4"	6"	1-1/2"	1"	1-15/16"	<b>SG5030511</b>	65.46	<b>45.80</b>
3/4"	8"	1-3/4"	1 1/8"	2-3/16"	<b>SG5030512</b>	88.51	<b>62.00</b>
7/8" & 1"	10"	2"	1 1/2"	2-15/16"	<b>SG5030515</b>	142.33	<b>99.60</b>
7/8" & 1"	6"	2"	1 1/4"	1-11/16"	<b>SG5030513</b>	97.49	<b>68.20</b>
7/8" & 1"	8"	2"	1 3/8"	1-15/16"	<b>SG5030514</b>	120.47	<b>84.30</b>

1789

**TECO** **Flange Nuts**

- Black oxide finish
- Case hardened
- 12L14 material



Thread Size	Flange Diameter	Overall Height	Washer Thickness	Width Across Flats	Order No.	Regular Price	SALE
1/4"-20	5/8"	5/16"	3/32"	1/2"	<b>SG5041601</b>	4.10	<b>2.90</b>
5/16"-18	3/4"	3/8"	1/8"	9/16"	<b>SG5041602</b>	4.34	<b>3.00</b>
3/8"-16	7/8"	1/2"	1/8"	11/16"	<b>SG5041603</b>	4.52	<b>3.20</b>
7/16"-14	1"	9/16"	5/32"	3/4"	<b>SG5041604</b>	5.21	<b>3.60</b>
1/2"-13	1 1/8"	11/16"	3/16"	7/8"	<b>SG5041605</b>	5.21	<b>3.60</b>
5/8"-11	1 3/8"	13/16"	3/16"	1 1/16"	<b>SG5041606</b>	7.04	<b>4.90</b>
3/4"-10	1 5/8"	1"	1/4"	1 1/4"	<b>SG5041607</b>	9.76	<b>6.80</b>
7/8"-9	1 3/4"	1 1/8"	1/4"	1 7/16"	<b>SG5041608</b>	13.56	<b>9.50</b>
1"-8	2"	1 1/4"	1/4"	1 5/8"	<b>SG5041609</b>	15.73	<b>11.00</b>
1 1/4"-7	2 1/2"	1 1/4"	1/4"	1 13/16"	<b>SG5041611</b>	32.29	<b>22.60</b>

1766





# PERFORMANCE-DRIVEN GLOVES FOR EVERY JOB.



**I2466**

**PERFORMANCE RATINGS:**

CUT	ABR	PUNCT	IMPACT

**SPECIFICATIONS:**

Style	I2466
Description	18G, A7, Foam Nitrile, Thumb Crotch, Abrasion 4, Impact 2
Material	Fiberglass/Stainless Steel/Nylon/Lycra/HPPE/Thermoplastic Rubber
Palm	Foam Nitrile
Cut Performance	ANSI Level A7
Abrasion Performance	ANSI Level 4
Puncture Performance	ANSI Level 4
Impact Level	ANSI Level 2
Size	S-XXL
Packaging (Inner Pack)	8 pairs
Packaging (Case Pack)	72 pairs
Touchscreen	Touchscreen compatible



**I2478**

**PERFORMANCE RATINGS:**

CUT	ABR	PUNCT	IMPACT

**SPECIFICATIONS:**

Style	I2478
Description	18G, A5, Nitrile dipped with TPR
Material	Stainless Steel/Fiberglass/HPPE/Nylon/Lycra
Palm	Foam Nitrile
Cut Performance	ANSI Cut Level A5
Abrasion Performance	ANSI Level 4
Puncture Performance	ANSI Level 4
Impact Performance	ANSI Level 1
Size	S-XXL
Packaging (Inner Pack)	8 Pairs (1 pair per polybag)
Packaging (Case Pack)	72 Pairs



**Y9214**

**PERFORMANCE RATINGS:**

CUT	ABR	4

**SPECIFICATIONS:**

Style	Y9214
Description	Cut Resistant Sandy Nitrile Palm Coated Touchscreen Gloves
Material	13 Gauge HPPE, Silicone-Free, Latex-Free
Palm	Sandy Nitrile
Cut Performance	ANSI Level A6
Abrasion Performance	ANSI Level A4
Puncture Performance	ANSI Level A4
Size	S-XXL
Packaging (Inner Pack)	12 Pairs
Packaging (Case Pack)	144 Pairs



**Y9216**

**PERFORMANCE RATINGS:**

CUT	ABR	5

**SPECIFICATIONS:**

Style	Y9216
Description	Seamless Knit Palm Coated Glove
Material	Blend of High Performance Fibers & Steel
Palm	Sandy Nitrile
Cut Performance	ANSI Level A7
Abrasion Performance	ANSI Level A5
Puncture Performance	ANSI Level A5
Size	S-3XL
Packaging (Inner Pack)	12 Pairs
Packaging (Case Pack)	144 Pairs



**Y9219**

**PERFORMANCE RATINGS:**

CUT	ABR	4

**SPECIFICATIONS:**

Style	Y9219
Description	18G, A9, PU Coated, ANSI Puncture 4
Material	Tungsten/Fiberglass/Polyester/HPPE
Palm	Polyurethane (PU)
Cut Performance	ANSI Level A9
Abrasion Performance	ANSI Level A9
Puncture Performance	ANSI Level 4
Size	S-3XL
Packaging (Inner Pack)	12 Pairs
Packaging (Case Pack)	144 Pairs

**PRICES EFFECTIVE OCTOBER 1ST THROUGH DECEMBER 31ST, 2024**

**NOT ALL ITEMS EXACTLY AS PICTURED. NOT RESPONSIBLE FOR TYPOGRAPHICAL ERRORS. WE RESERVE THE RIGHT TO LIMIT QUANTITIES. ITEMS AVAILABLE WHILE SUPPLIES LAST.**